

P6 ENGLISH LANGUAGE (EL)



01

Be Proactive ®

Understanding your child's way of learning is important to encourage him/her to enjoy learning

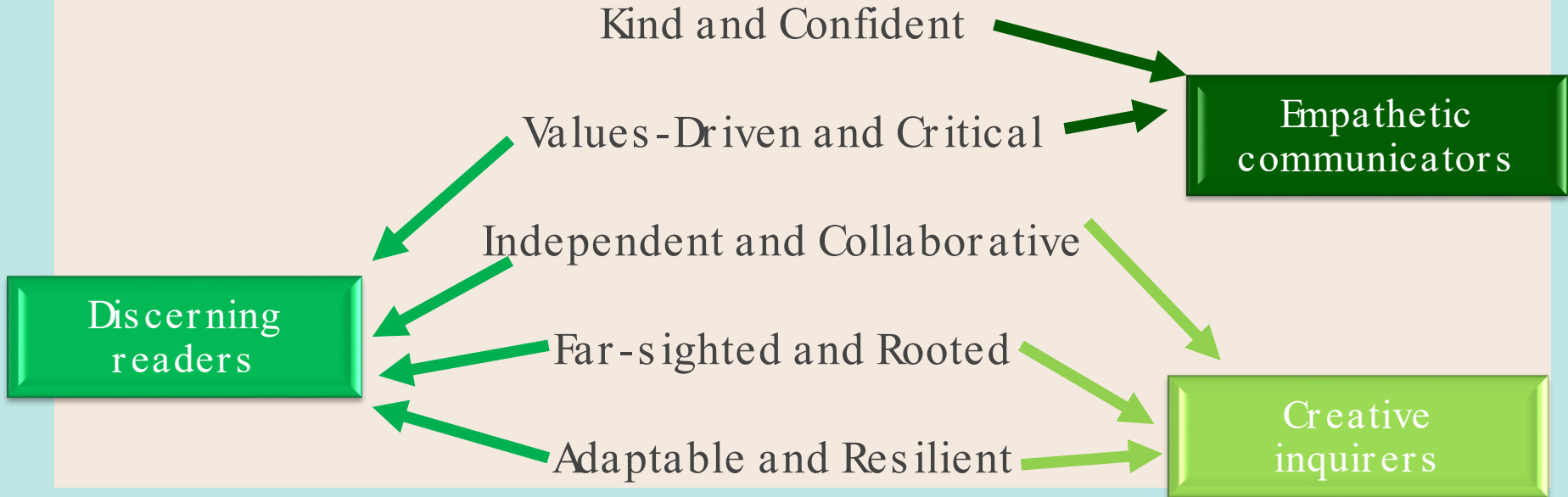


Click on the title of the video or this link

<https://www.youtube.com/watch?v=INQ9LvJgbGM>

02 Begin With the End in Mind ®

By developing every pupil as an effective and affective EL user, it also aligns to the process of educating him/her to embody the student outcomes.



03

Put First Things First ®

To achieve the outcomes, ~~need~~ to develop every pupil in these three competencies

Empathetic communicators

- Listen actively to different perspectives.
- Communicate confidently, effectively and sensitively.
- Balance an appreciation of the Singapore spirit.

Discerning readers

- Stay well informed and self-directed in the use of information.
- Able to distinguish fact from falsehood.
- Process and evaluate information critically and with discernment.

Creative inquirers

- Explore and evaluate real-world issues and multiple perspectives.
- Gather and synthesise information from diverse print, non-print and digital networked sources.

04 Think Win-Win®

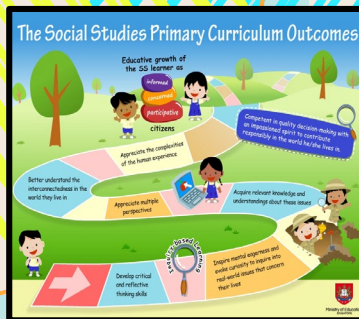
Social Studies (SS) is an enabler that has an integrated engaging elements of EL components and in education.

- Empathetic communicators
- Discerning readers
- Creative Inquirers

EL
English Language

SS

CCE
Character &
Citizenship
Education



- Self awareness
- Social awareness
- Resilient
- Informed decisions
- Take pride in Singapore
- Care for others
- Reflective learners



Synergy between English Language and Social Studies

SS is an enabler that has an integrated engaging elements of EL components and CCE values in education.

EL STELLAR unit “Coolie Boy” reflects the context of Singapore in the olden days. There are instances of slavery and discrimination. These concepts are also apparent in the ancient civilisations of other parts of the world - link past lifestyles / occupations.

SS - Understanding
Features and Legacies of
Civilisations

01
CLUSTER 3

Primary 6

02

03
Features &
Legacies of
Civilisations

SS - Appreciating
Singapore, the Region
and the World We Live In

SS - How are the legacies
of the civilisations seen in
our lives today?

05

Seek First to Understand, Then to Be Understood ®

Platforms to check our students' learning progress to understand their learning



MOEBASED

- **Strategies for English Language Learning and Reading (STELLAR)**
- **Foundation English (FEL) Programme**



SCHOOBASED

- Xingnan Transforming Experiences through Innovation and Discovery (XTEND)
- Learning Dispositions (LDs)
- Focused remedial lessons
- Small group teaching
- EL Enrich leveraging Leader In Me (The 7-Habits) Applied Learning Programme, Blended Learning and Students' Voices



ASSESSMENTS

Term 1 Review

- Writing (Paper 1)
- Language use & Comprehension (Paper 2)

Term 2 Review

- Oral Communication (Paper 4)
- Paper 2

Term 3 Review

- (Prelim Exams)
- Paper 1
- Paper 2
- Listening Comprehension (Paper 3)
- Paper 4

SWIRL

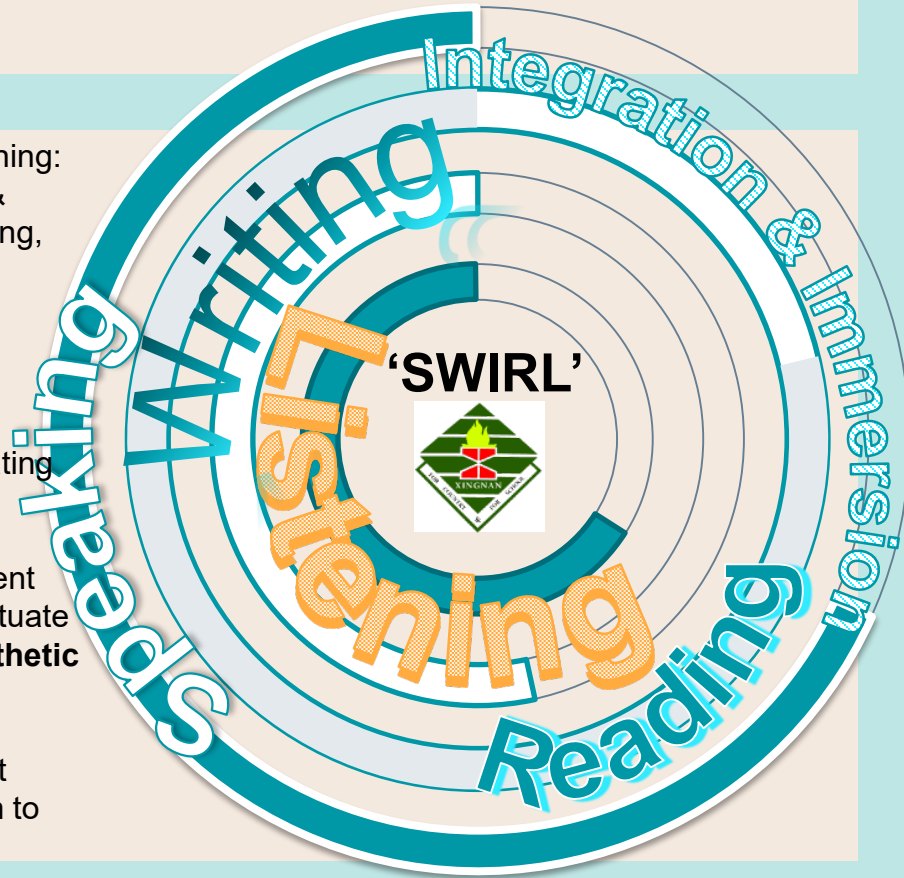
‘SWIRL’ is a mnemonic for the five main areas of language learning: **S**peaking & Representing, **W**riting & Representing, **I**ntegration & Immersion in learning Grammar & Vocabulary, **R**eadng & Viewing, and **L**istening & Viewing.

‘SWIRL’ conceptualises the processes of T & L of English Language (EL) in Xingnan.

In today’s VUCA world, students must learn beyond communicating in EL but be effective and affective communicators of EL.

‘SWIRL’ serves as Xingnan’s blueprint to support the achievement of the objectives of all EL programmes and initiatives that perpetuate the development of the three competencies in our pupils: **empathetic communicators, discerning readers and creative inquirers.**

‘SWIRL’ facilitates the creation of a vibrant learning environment where students use EL language as an opportunity and platform to create values, discover new knowledge and learn new skills.



06

Synergize ®

Partnering with parents is key in ensuring the child's effective use of

Integration & Immersion

Find ways to get your child to use EL in his/ her daily life e.g. seeking assistance from a sales assistant at a mall.

Writing

Allow them to purposefully express their emotions in print taking into consideration the purpose, audience, context, and culture.

Speaking

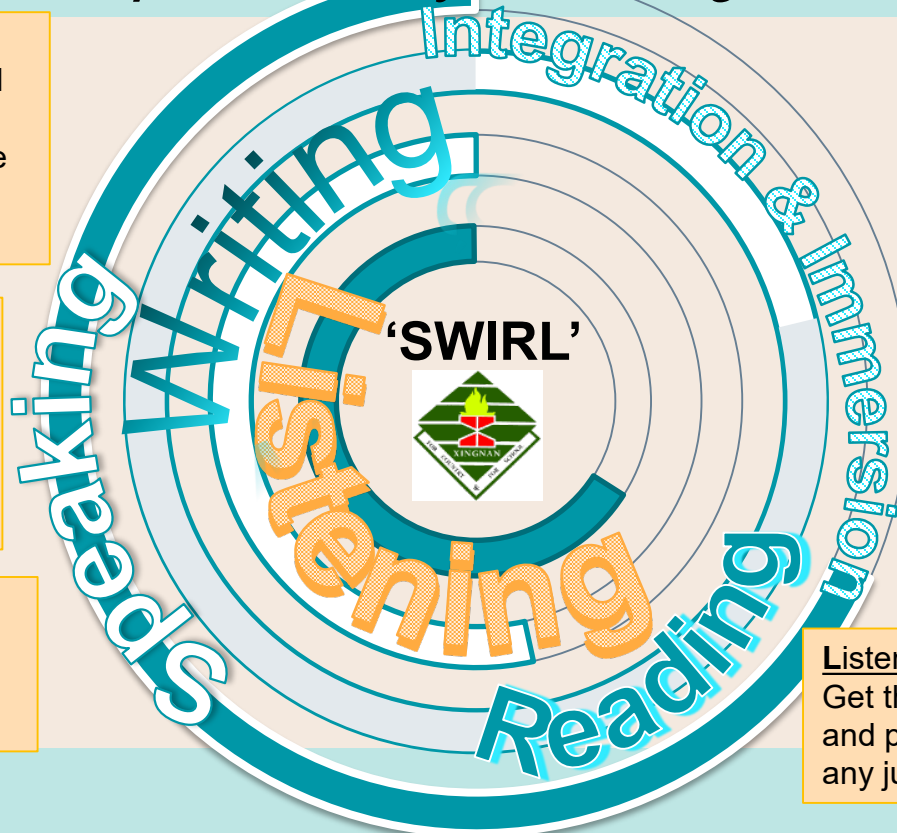
Provide opportunity for them to speak in proper and standard EL.

Reading

Provide varied and age-appropriate EL reading materials at home for children's use from diverse print, non-print and digital networked sources.

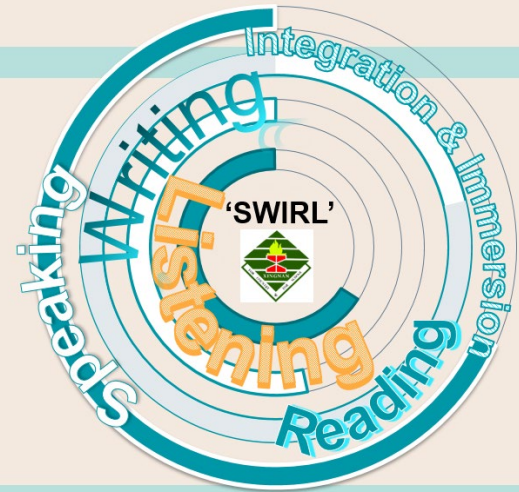
Listening

Get them to listen to others' views and perspectives before making any judgments.



07 Sharpen the Saw ®

Well-balanced learning experiences



Reading & Listening

Supported Reading, Shared Book Approach, Sustained Silent Reading, Class library corner, Reading Comprehension strategies, School library visits, Little Red Dot by The Straits Times, Self-directed online listening practices, applying spelling skills and learner strategies; Spelling Bee competition

Speaking & Writing

Class discussions, Speaking package, Literary Week, Literary Expressions, Modified Language Experience Approach (MLEA) for writing, STELLAR Unit Writing – Writing Process Cycle, Displaying pupils' writings

Integration & Immersion

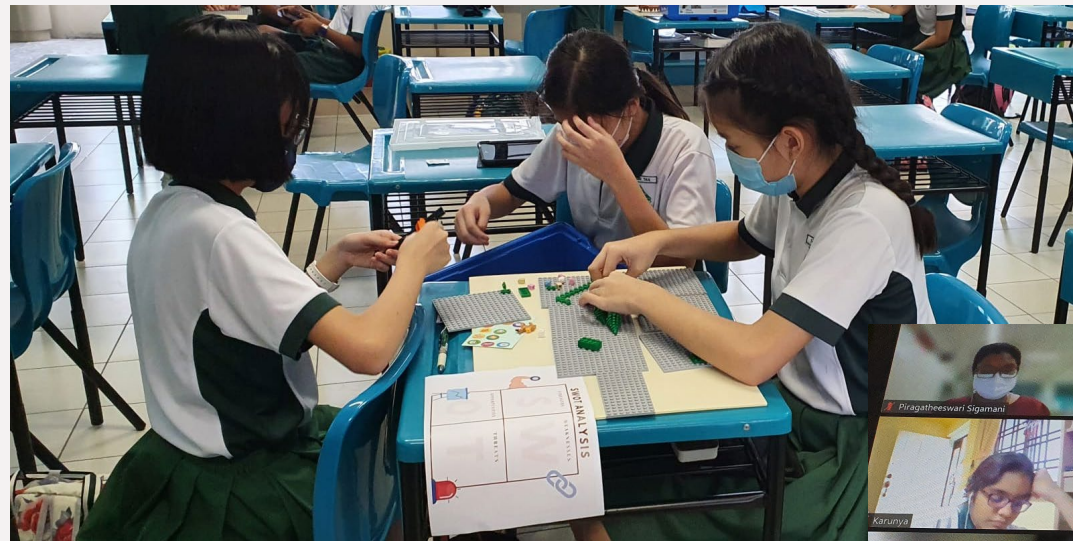
Contextualise learning by using EL to discover new knowledge and learn new skills e.g. EL Enrich, MOCCA

Learning Materials

- STELLAR Workbooks
- STELLAR Reader Text
- MC Companion Booklets
- e-books in Student Learning Space
- Essential English Grammar (New Edition)
- XNPS Packages; Speaking, Writing, Reading, Listening, and Spelling Kits

07 Sharpen the Saw ®

Well-balanced learning experiences



P5 & P6 EL Enrich

Pupils learn about current affairs and participate in external competitions.



07 Sharpen the Saw ®

Well-balanced learning experiences

Spelling Bee competition

As part of an extension to the weekly spelling lesson, we provide opportunities for pupils to apply the skills they learnt in spelling.



THANK
YOU

