

**WELCOME TO XNPS!**

**P4 Parents' Briefing Session**  
**Friday 19 January 2018**

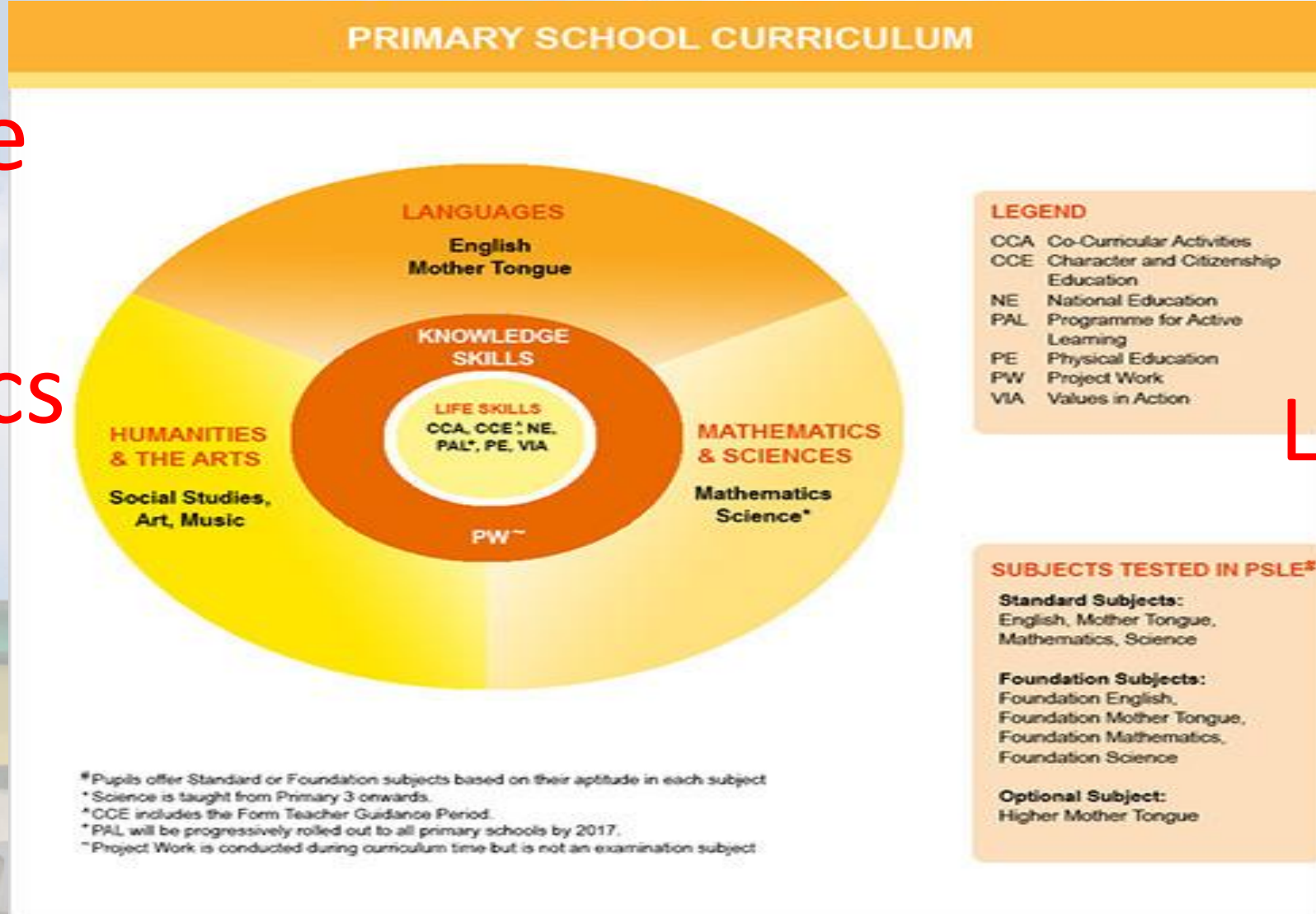
**Xingnan Primary School**

# PRIMARY SCHOOL EDUCATION

Preparing Your Child For Tomorrow

Your Child's Best Interests at Heart

Xingnan Primary School



Cognitive

Morale

Aesthetics

Leadership

Physical

Social &  
Moral

**@Xingnan**

Learning Journeys

Commemoration of  
TTD, IFD, RHD & ND

Road Safety Games

IPW

VIA @Nursing Home

Outdoor Activities

MOCCA

**Xingnan Primary School**



# Useful Resource

<https://www.moe.gov.sg/>

EDUCATION>PRIMARY>PRIMARY SCHOOL EDUCATION BOOKLET>4 LANGUAGES

Xingnan Primary School

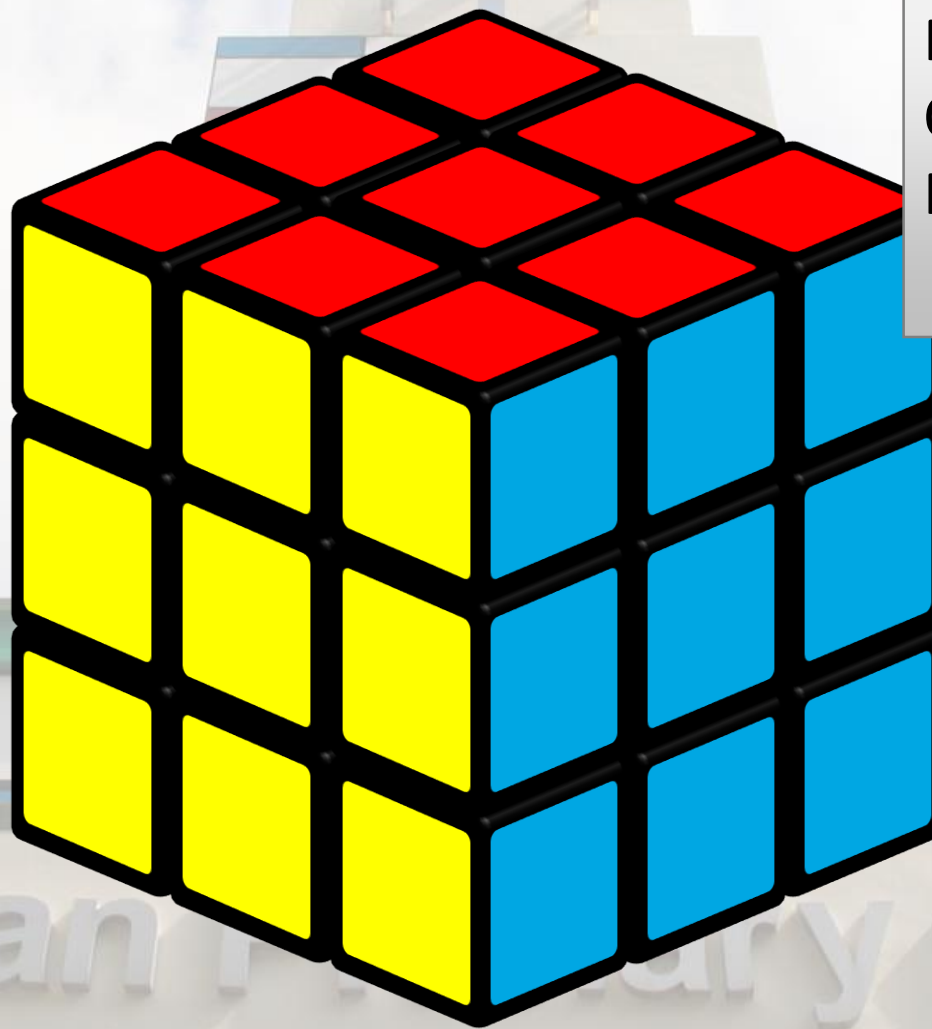
# $x^3$ Learning Years

## xPlore (P3-P4)

Purposeful Learning  
Opportunities through  
Resource-Rich Environments

## xTend (P5-P6)

Transforming Experiences  
through iNnovation and  
Discovery



## xCite (P1-P2)

Curriculum Integration  
through Thematic  
Experiences

Xingnan

Primary School

# QUALITY SCHOOL EXPERIENCE

## Curricular

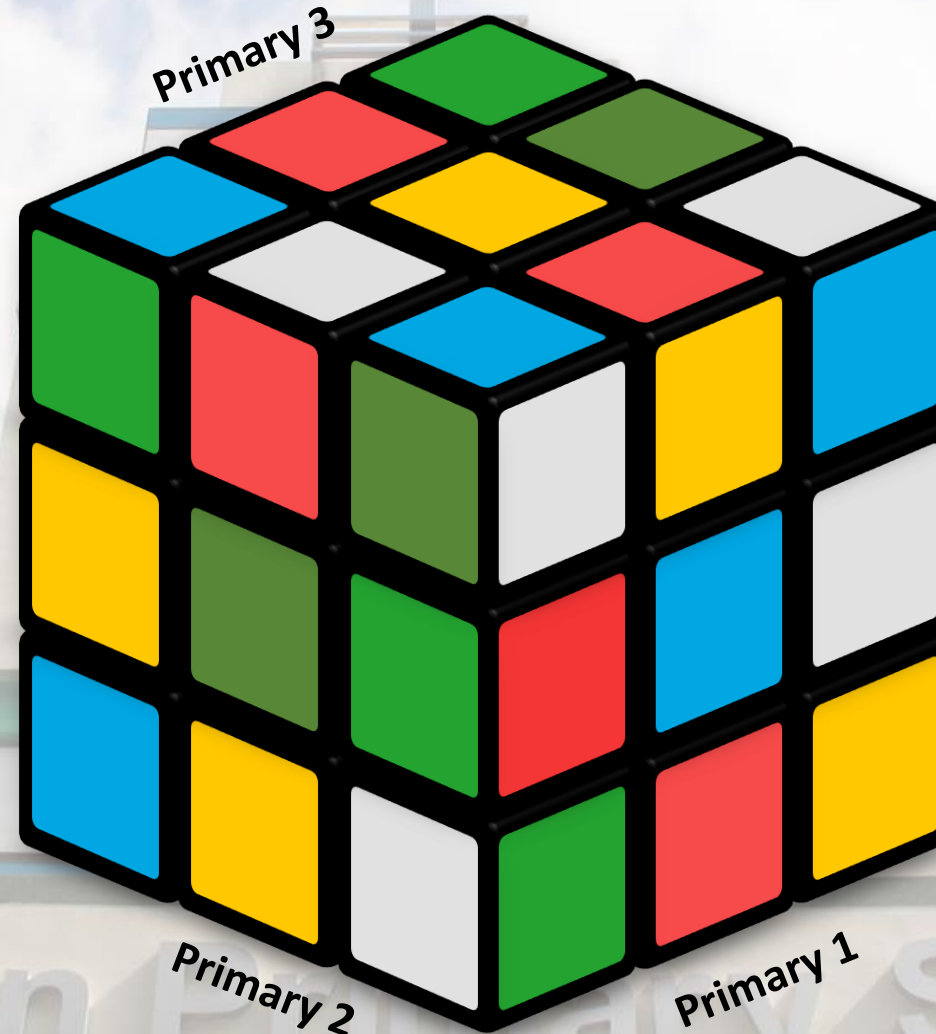
English, SS, Maths, Science,  
MTL, PAM

## Co-Curricular

CCE, CCA, MOCCA, PAL, FTGP,  
NE, Sexuality Education, ICT,  
Pastoral Care, Leadership

## Student Development

IPW, Learning Journey,  
Innovation, VIA



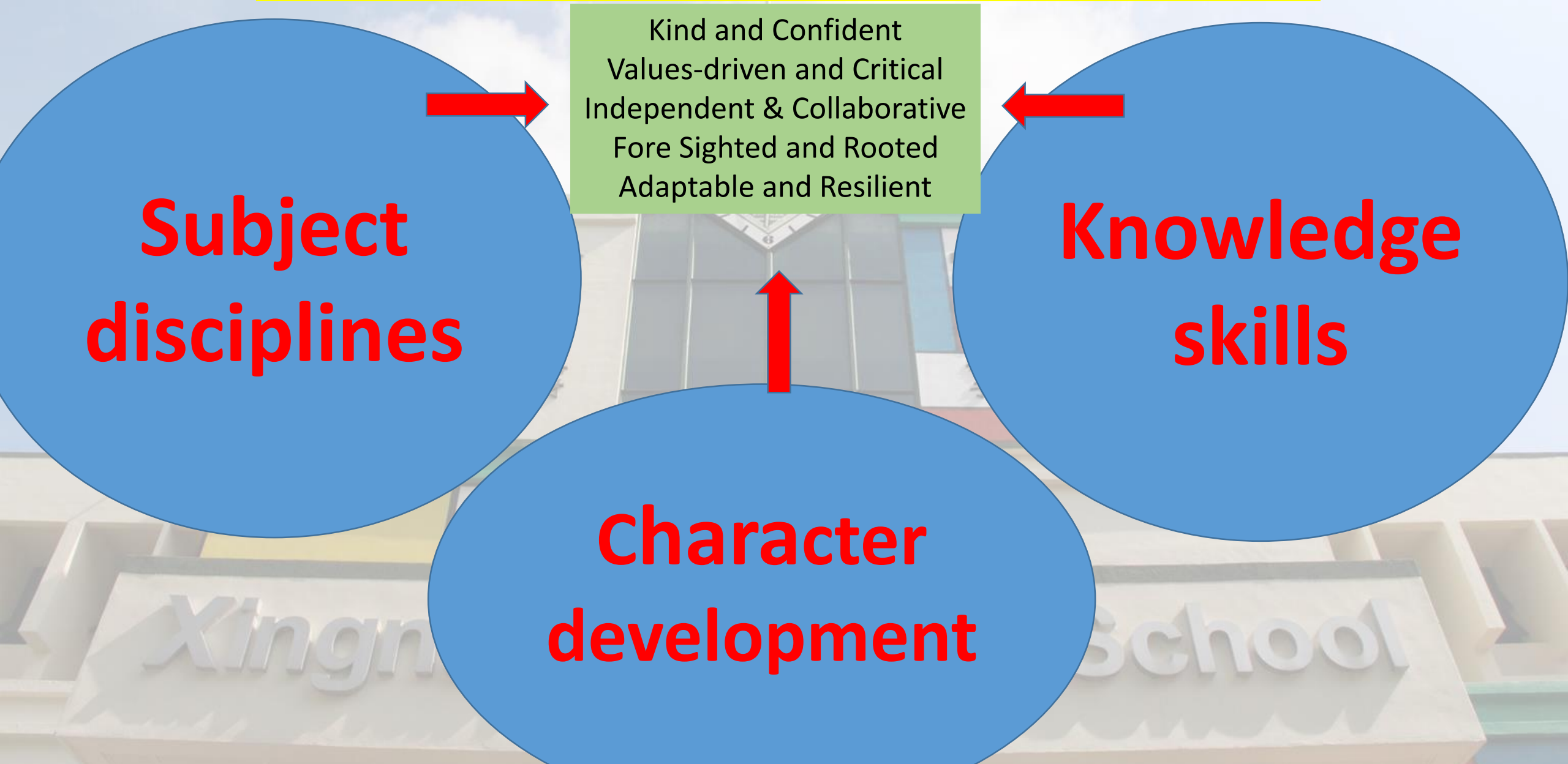
## School Events

Carnival, Sports Day, MuzArt,  
National Day, Teachers' Day

## Health and Safety

Fire Drill, Health Talks, Safety  
Talks

# EXPECTED OUTCOMES







Preparing for the  
21<sup>st</sup> Century

Preparing for the  
next level of education

y School

**What is important  
from P4 to P6**

```
graph TD; A[What is important from P4 to P6] --> B[Subject-based Banding]; A --> C[Preparing for School Choices]; B --> D[Foundation Subjects]; B --> E[Standard Subjects]; B --> F[Higher MT]; C --> G[DSA];
```

The diagram is a flowchart with a background image of a school building. It starts with a top box 'What is important from P4 to P6'. Two arrows point down to 'Subject-based Banding' and 'Preparing for School Choices'. From 'Subject-based Banding', three arrows point down to 'Foundation Subjects', 'Standard Subjects', and 'Higher MT'. From 'Preparing for School Choices', one arrow points down to 'DSA'.

**Subject-based  
Banding**

**Preparing for  
School Choices**

**Foundation  
Subjects**

**Standard  
Subjects**

**Higher  
MT**

**DSA**





Ministry of Education  
SINGAPORE

**Click on Education**



Singapore Government  
Integrity • Service • Excellence

[FAQ](#) • [FEEDBACK](#) • [CONTACT US](#) • [SITEMAP](#)



Search, Learn, Explore



**EDUCATION**

**ADMISSIONS**

**CAREERS**

**NEWS**

**ABOUT US**



**Ask Jamie @ MOE**

Ask about P1, S1, JAE, DSA,  
PSEA, School Fees, SCC...





EN



on X Subject-Based Banding ( X

Secure | https://www.moe.gov.sg/education

 Ministry of Education  
SINGAPORE

 Singapore Government  
Integrity · Service · Excellence

FAQ · FEEDBACK · CONTACT US · SITEMAP

EDUCATION ADDITIONS CAREERS NEWS ABOUT US

Education System

Pre-School

**Primary**

Secondary

Special Education

Post-Secondary

Pre-University

Private Education

School Programmes

Syllabuses

Edusave

Primary School Curriculum

Primary School Education Booklet

Primary 1 Registration Insert

**Subject-Based Banding (Primary)**

From Primary To Secondary Education

Student Care Centres (SCCs)

**Click on Primary**

**Click on Subject-based Banding (Primary)**

GENERAL INFO

EN ? M ↑ N ↺ ↻

https://www.moe.gov.sg/education/primary/subject-based-banding-(primary)





EDUCATION

ADMISSIONS

CAREERS

NEWS

ABOUT US

Education > Primary > Subject-Based Banding (Primary)

EDUCATION

Education System

Primary School

Primary

Primary School  
Curriculum

Primary School  
Education Booklet

Primary 1  
Registration Insert

Subject-Based  
Banding (Primary)

From Primary to  
Secondary Education

Student Care Centres  
(SCCs)

## SUBJECT-BASED BANDING (PRIMARY)

### CATERING TO YOUR CHILD'S ABILITIES

Every child is unique, and has different abilities. Subject-Based Banding is an education that caters to the different abilities of your child. It was introduced as a refinement to the standard curriculum to cater to the strengths and interests of your child.

Subject-Based Banding caters to the strengths and interests of your child.

**What is Subject-based Banding?**

### WHAT IS SUBJECT-BASED BANDING?

Subject-based Banding provides greater flexibility for your child by offering him the option of a combination of standard and foundation subjects, depending on his strengths. For example, if he excels in English and Mother Tongue but needs more support in Mathematics and Science, he may choose to take the first two subjects at the standard level and the others at the foundation level.

Such a choice will allow your child to focus on and stretch his potential in the subjects that he is strong in while building up the fundamentals in the subjects that he needs more support in.

### HOW DOES SUBJECT-BASED BANDING WORK?

At Primary 4

Student sits for school-based examinations

School recommends a subject combination based on the student's results.

Parents fill up an option form indicating the preferred combination.



EN



10:4  
16/01

> Private Education

> School Programmes

> Syllabuses

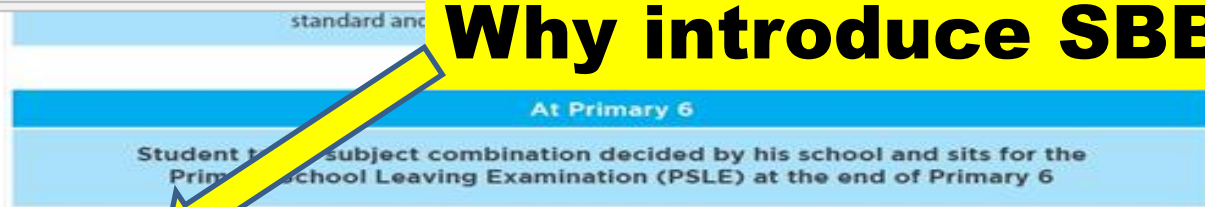
> Edusave

> Financial Assistance

> School Terms and Holidays

> National Examinations

# Why introduce SBB?



## WHY INTRODUCE SUBJECT-BASED BANDING?

- To recognise the different abilities of students and give them greater flexibility to concentrate on the subjects they are good at.
- To encourage more interaction among students with different strengths.

## SUBJECT-BASED BANDING AND SECONDARY SCHOOL ADMISSION: HOW ARE THEY RELATED?

Progression to secondary level depends on your child's PSLE score. The different expectations of standard and foundation subjects will be taken into account when your child's PSLE score is calculated.

Previously, students from EM3 stream would mostly enter the Normal (Technical) course at secondary level.

With Subject-based Banding, some students with clear strengths in some areas are able to offer at least one subject at the standard level. If they excel in these subjects, they will then have the opportunity to pursue higher-level options at secondary school.

Offering subjects at the foundation level is not a disadvantage to your child. It enables him to focus on building up strong fundamentals in these subjects and better prepares him for progression to secondary school.

## WHAT ARE SOME CHOICES AVAILABLE?

If your child (for P4 exam)	Your child may be recommended to take
Passes all 4 subjects and performs very well in Mother Tongue Language	4 standard subjects + Higher Mother Tongue Language

# Why Subject Based Banding?

- Pupils are of different abilities
- Pupils have different abilities in different subjects



WHAT ARE SOME CHOICES AVAILABLE?

If your child (for P4 exam)	Your child may be offered
Passes all 4 subjects and performs very well in Mother Tongue Language	4 standard subjects + Higher Mother Tongue Language
Passes all 4 subjects	4 standard subjects
Passes 3 subjects	4 standard subjects
Passes 2 subjects or less	4 standard subjects; or 3 standard subjects + 1 other foundation subject; or 2 standard subjects + 2 other foundation subjects; or 1 standard subject + 3 other foundation subjects; or 4 foundation subjects

What are the choices?

WE ARE ALWAYS HERE TO HELP

Schools will help recommend subject combinations, based on your child's needs and abilities.

If you have any questions on Subject-based Banding, you should approach your child's school for help.

SUPPORT AND CONTACT

For more information, please visit the MOE website at [www.moe.gov.sg/education/primary](http://www.moe.gov.sg/education/primary). You can also call the MOE Customer Service Centre at 6872 2220, or connect with us on Facebook at [www.facebook.com/moesingapore](http://www.facebook.com/moesingapore).

BROCHURES



# Subjects at P5

- ✓ English Language
- ✓ Mathematics
- ✓ Science

Offered at standard and foundation levels

- ✓ Mother Tongue

Offered at higher, standard or foundation levels

# Combinations of subjects offered at P5

- 4 standard subjects + Higher Mother Tongue
- 4 standard subjects
- 3 standard subjects + foundation Mathematics
- 3 standard subjects + foundation Mother Tongue
- 3 foundation subjects + standard Mother Tongue
- 4 foundation subjects



**Why is Higher  
Mother Tongue  
offered?**

# Criteria for Subject Combination

Based on P4 performance in:

- ☒ English
- ☒ Mother Tongue
- ☒ Mathematics
- ☒ Science



# Criteria

P4 Performance	P5 Subject Combination
Pass 4 subjects with band 1 in Mother Tongue and at least band 2 in EMS	4 standard subjects with Higher Mother Tongue
Pass 4 subjects	4 standard subjects
Pass 3 subjects	4 standard subjects



# Criteria

P4 Performance	P5 Subject Combination
Pass 2 subjects	2 standard + 2 foundation subjects
Pass 1 subject – Mother Tongue or English Language and >60 marks	1 standard + 3 foundation subjects

# Criteria

P4 Performance	P5 Subject Combination
Pass 1 subject – not Mother Tongue nor English Language	4 foundation subjects
Fail all subjects	4 foundation subjects



# Parental Choice



- School recommends a subject combination
- Parents have the option at the end of P4

**CHOOSE WISELY**



# Movement from P5 to P6

Did not pass all subjects in P5 –

Do 4 foundation subjects in P6

To do Higher Mother Tongue in P6 –

Pass Higher Mother Tongue in P5 and at least band 2 in Mother Tongue



# More info about SBB

- Visit MOE's SBB website:

[https://www.moe.gov.sg/education/primary/subject-based-banding-\(primary\)](https://www.moe.gov.sg/education/primary/subject-based-banding-(primary))

Brochure will be given to your child/ward.

Xingnan Primary School

**What is important  
from P4 to P6**

```
graph TD; A[What is important from P4 to P6] --> B[Subject-based Banding]; A --> C[Preparing for School Choices]; B --> D[Foundation Subjects]; B --> E[Standard Subjects]; B --> F[Higher MT]; C --> G[DSA];
```

The diagram is a flowchart with a background image of a school building. It starts with a top box 'What is important from P4 to P6'. Two arrows point down to 'Subject-based Banding' and 'Preparing for School Choices'. From 'Subject-based Banding', three arrows point down to 'Foundation Subjects', 'Standard Subjects', and 'Higher MT'. From 'Preparing for School Choices', one arrow points down to 'DSA'.

**Subject-based  
Banding**

**Preparing for  
School Choices**

**Foundation  
Subjects**

**Standard  
Subjects**

**Higher  
MT**

**DSA**

# DSA – SEC

## CCA (Volleyball / Basketball / International Dance)

BUKIT PANJANG GOVERNMENT HIGH; RIVER VALLEY HIGH SCHOOL; HUA YI SECONDARY SCHOOL; FAIRFIELD METHODIST; JURONG SECONDARY; UNITY SECONDARY; XIN MIIN SECONDARY; BUKIT BATOK SECONDARY

CHUN XIN YING; CHUA ZHI LIN; ZAYN TAN HUAI YING; NG XINYI CHERLYN; YAP POH YEE; HOUWARY SYADIE HADDAQ BIN SANDY AVIANTO; LIM THENG XIANG; TAN YI XUAN; ALOYSIUS WOO WAI CHUN; DEAN ERLYANAN BINTE JASMAN; DAYAN WEI ZHIXIANG; EBENEZER TAY JIN FONG; EUGENE SENG; JACIE YAP QIAN XI; JARED CHUA JUN JIE; KIERON LIM YU HANG; LIM EN QI; MOHAMMAD IZZUDDIN BIN MUHAMMAD ISHAM; SHERLENE BO XIU LIN; TAN PEI TENG CLAIRE; CHEN KAI TING; YAP SHUN YEE; MOHAMMED HAZIQ BENYAMIN BIN MOHAMMED ERWAN

# DSA – SEC

## Student Leadership

HUA YI SECONDARY; JURONG WEST SECONDARY

ELIN NG YU LIN; SENTHIL VEL NIDHISH

# DSA – SEC

## Academics

RAFFLES INSTITUTION; SCHOOL OF SCIENCE & TECHNOLOGY; RAFFLES  
GIRLS' SCHOOL (SECONDARY)

GEORGE INIYAN KAROL; ALBEE CHAI BUO YIN;  
YU GRACE CHENXI; CHONG YU LIN



# DSA – SEC

## Environmental Science

RIVER VALLEY HIGH SCHOOL

SOH WEI KEAN ADRINA

# COMMUNICATION

<http://xingnanpri.moe.edu.sg/>

## XNPS EXPERIENCE

### SCHOOL DIARY

**SNAC**

Xingnan Primary School

**FEEDBACK**

**QUESTIONS**

**ANSWERS**

**Thank You**

**Xingnan Primary School**