



ESTABLISHED 1932



Welcome to P6 Parents' Briefing 2017



ESTABLISHED 1932

Parents' Briefing Slides



Parents' briefing slides will be uploaded onto the school website

The screenshot shows the Xingnan Primary School website. The header is a red banner with navigation links: Home, About Us, School Information, Programmes, CCA, Parents' Corner, and Achievements. Below the banner is a green and yellow curved section featuring the school logo, the name 'Xingnan Primary School', the motto 'A Self-directed Learner, A Gracious Citizen', and a photo of a student. A search bar is also present. The main content area shows a breadcrumb trail 'Home > About Us > Our People' and the title 'Our People'. The text describes the school's staff and team. A sidebar on the right lists various links including a welcome note, key personnel, form teachers, allied educators, administrative staff, SAC 2016, alumni, parent support group, photo gallery, school overview, and contact us.

Home About Us School Information Programmes CCA Parents' Corner Achievements

 **Xingnan Primary School**
A Self-directed Learner, A Gracious Citizen

search

Home > About Us > Our People

Our People

Xingnan Primary School has a strong and supportive teaching staff, para-professionals as well as an effective executive and administrative team. Working together as a team, our people creates the vibrant environment we desire, to support the teaching and learning for our pupils and brings the programmes offered here in Xingnan to greater heights.

- Welcome note from the Principal
- **Our People**
 - Key Personnel
 - P1 - P6 Form Teachers
 - Allied Educators
 - Executive & Administrative Staff
 - SAC 2016
 - Alumni
 - Parent Support Group
- Photo Gallery
- School Overview
- Contact Us



ESTABLISHED 1932

Introduction

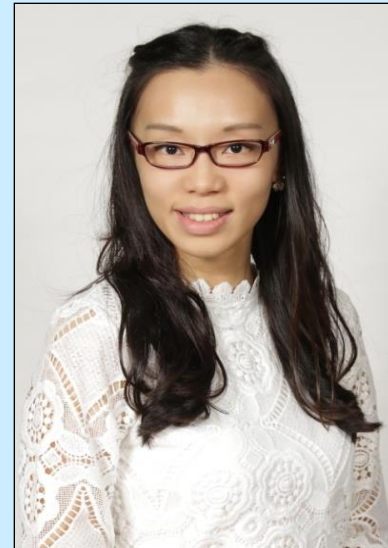


P6 Head of Level



Mrs Tina Ng
ng_tina@moe.edu.sg

P6 Assistant Head of Level



Ms Tan Sing Ye
sing_ye_tan@moe.edu.sg



ESTABLISHED 1932

P6 Form and Co-Form Teachers



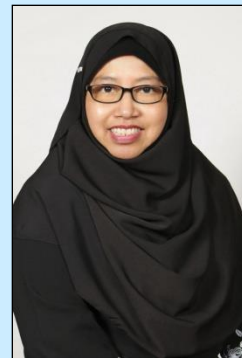
6A Form Teacher
Ms Tan Sing Ye



6A Co-Form Teacher
Mrs Tan Hui Min



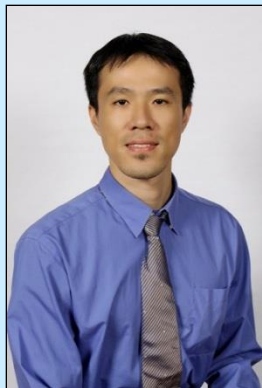
6C Form Teacher
Mr Leomund Teh



6C Co-Form Teacher
Mdm Tuminah



6B Form Teacher
Ms Lim Pei Gen



6B Co-Form Teacher
Mr Zhong Ming Qing



6D Form Teacher
Ms Francesca Wah



6D Co-Form Teacher
Mrs Soong Buang Eng



ESTABLISHED 1932

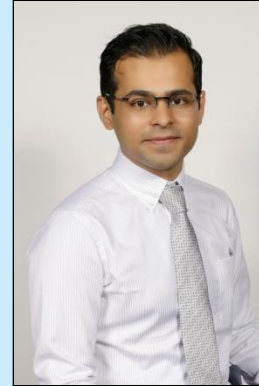
P6 Form and Co-Form Teachers



6E Form Teacher
Mr Joseph Ang



6E Co-Form Teacher
Mr Taufek Siniwi



6F Form Teacher
Mr Stephen J. D Cruz



6F Co-Form Teacher
Mr Abdul Wahab



6G Form Teacher
Mr Timothy Tan



6G Co-Form Teacher
Mr Tony Khoo



ESTABLISHED 1932

Agenda



- **Singapore Education Journey**
 - Direct School Admission (DSA)
 - Selection of Secondary School
- **PSLE**
 - T-Score
 - PSLE Timeline
- **Support from School**
- **Tips to help your child prepare for PSLE**
- **Examination Format by respective IP Heads**
- **Briefing by Form Teachers (Classroom)**



ESTABLISHED 1932

Agenda

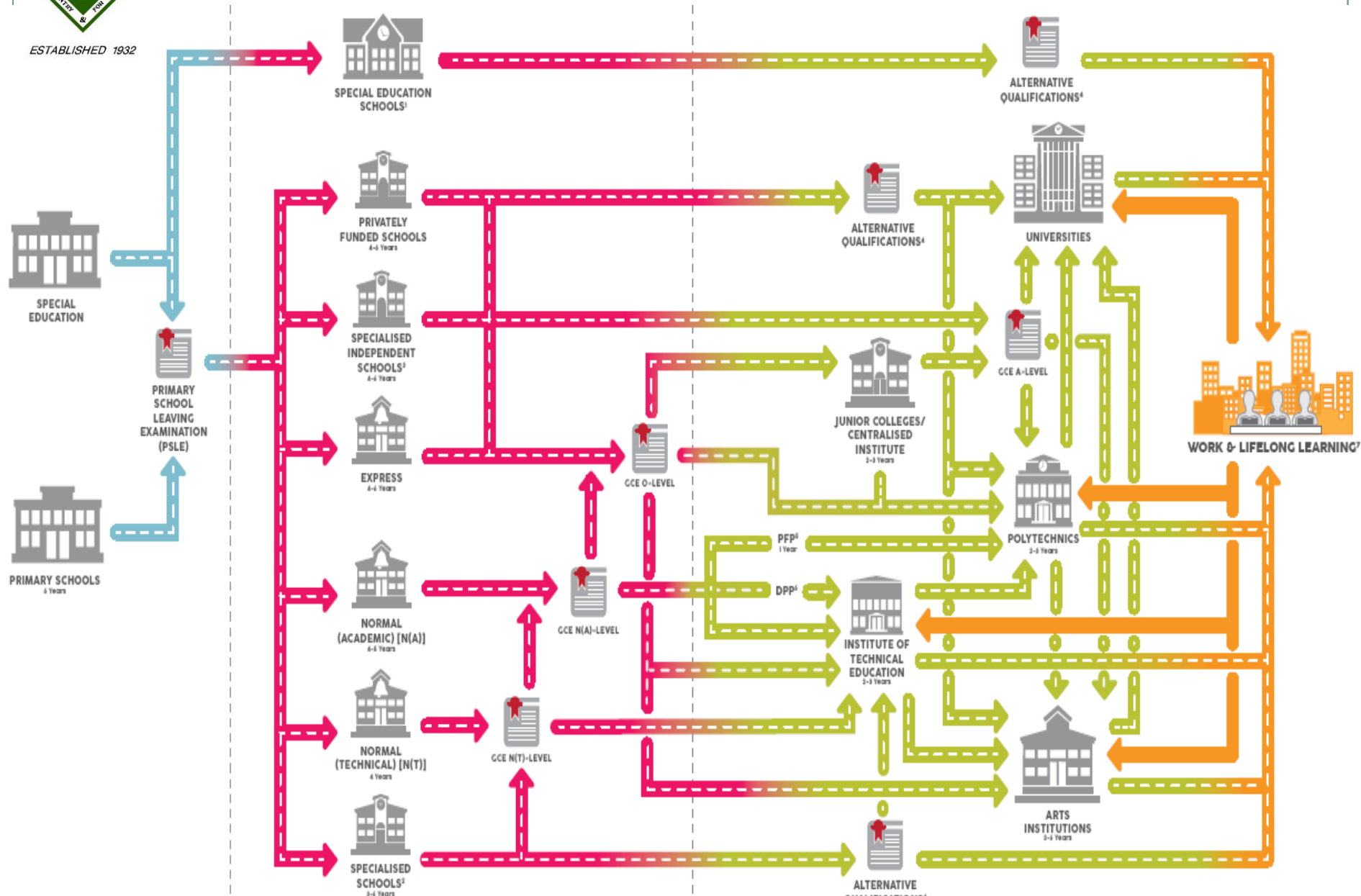


- 1. Singapore Education Journey**
 - DSA-Sec
 - Selection of Secondary Schools
- 2. PSLE**
 - T-Score
 - Timeline
- 3. Support from School**
- 4. Tips for Parents**



ESTABLISHED 1932

Singapore Education Journey





ESTABLISHED 1932



**SPECIAL
EDUCATION**



PRIMARY SCHOOLS
6 Years



**PRIMARY
SCHOOL
LEAVING
EXAMINATION
(PSLE)**



**SPECIAL EDUCATION
SCHOOLS¹**



**PRIVATELY
FUNDED SCHOOLS**
4-6 Years



**SPECIALISED
INDEPENDENT
SCHOOLS²**
4-6 Years



EXPRESS
4-6 Years



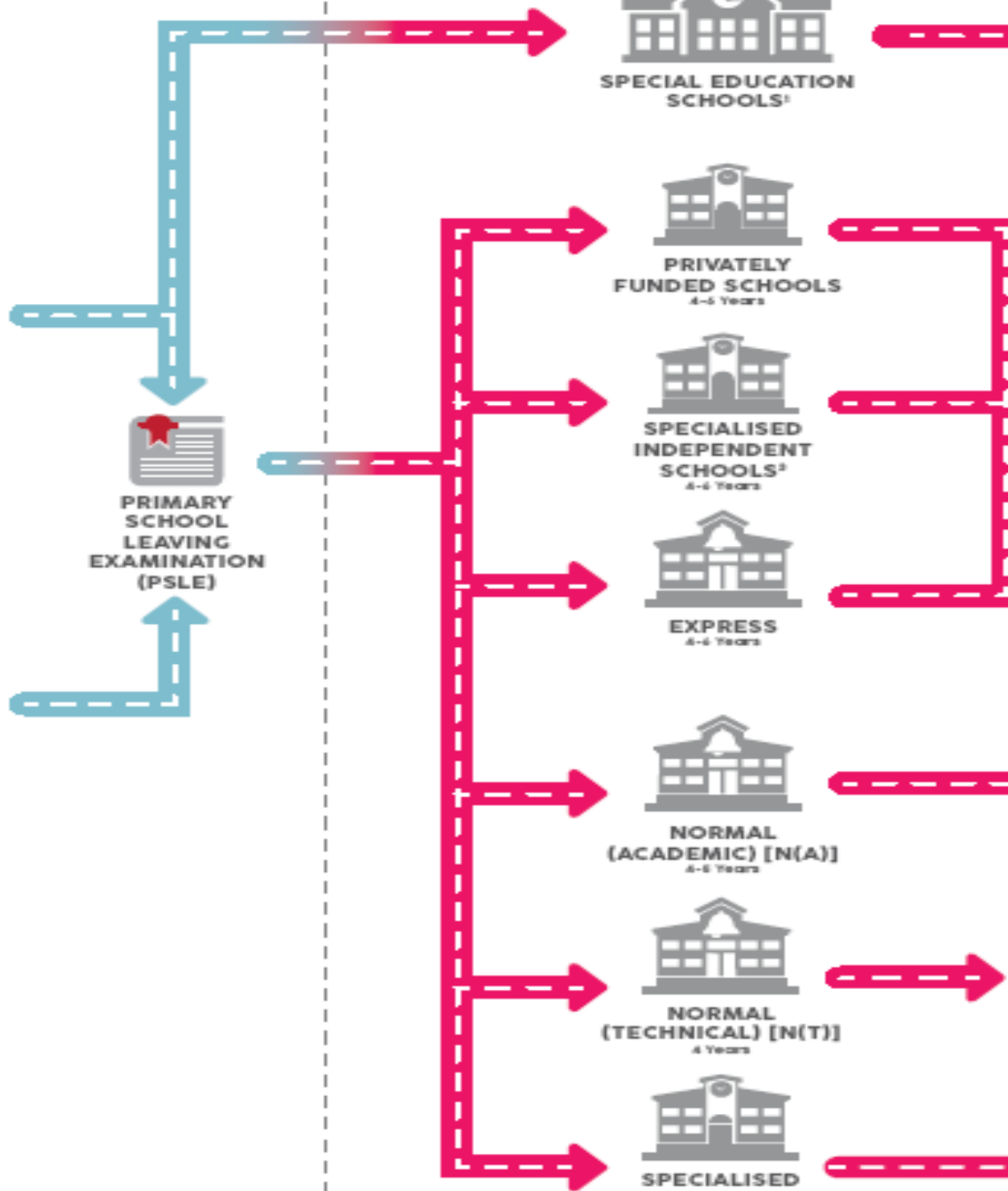
**NORMAL
(ACADEMIC) [N(A)]**
4-6 Years



**NORMAL
(TECHNICAL) [N(T)]**
4 Years



**SPECIALISED
SCHOOLS²**
3-6 Years





ESTABLISHED 1932

Transition from P5 to P6



- Journey towards PSLE
- Increased **rigour** and **demand** from Primary 5
- Continual **participation** in CCA and leadership roles (Semester 1)
- Continual emphasis on **holistic development** including **character building**
- Greater emphasis on **mental well-being** and **positive relationships**



ESTABLISHED 1932

PSLE

A Placement Test for Secondary Schools



- Reflect **relative achievement** level of pupil **compared to peers**.
- Place students into different courses based on his/her academic ability.
- Enable posting to secondary school **by merit** and, as far as possible, **school of choice**.



ESTABLISHED 1932

After Primary School



Courses in secondary schools:

- Express stream
- Normal (Academic) stream
- Normal (Technical) stream

Pupils who do not perform well in PSLE and are not eligible for posting to a secondary school may repeat in the same school or apply to Northlight School or Assumption Pathway School



ESTABLISHED 1932



DIRECT SCHOOL ADMISSION (DSA)



ESTABLISHED 1932

What is DSA-Sec?



- Introduced by the MOE in 2004.
- Seeks to promote **holistic education** and provides students an opportunity to demonstrate a more **diverse range of achievements and talents** in seeking admission to a secondary school.



ESTABLISHED 1932

What is DSA-Sec?



- Gives participating schools **greater flexibility** in their admission of students
- Adheres to key principles of **transparency and meritocracy**



ESTABLISHED 1932

What is DSA-Sec?



- Talents & achievements, in both **academic and non-academic areas**, can be considered for S1 admission.
- Each participating school sets its **own criteria for selection**, based on the academic and/or non-academic areas that the school would like to emphasise.



ESTABLISHED 1932

What is DSA-Sec?



- Include portfolios, trials, interviews or tests
- Participating schools: e.g. SJI, NUS High, SST, SOTA, etc.
- Selection will be based on the pupils' achievements and talents before the PSLE results are released.



ESTABLISHED 1932

Types of Schools



**Special
Assistance
Programme
Schools
(SAP)**

**Integrated
Programme
Schools**

**Independent
Schools**

**Autonomous
Schools**

**Schools with
Niche
Programmes**

School types

Specialised Schools

**S'pore
Sports
School**

**NUS High
School of
Math &
Science**

**School of
the Arts
(SOTA)**

**School of
Science &
Technology
(SST)**

**North Light
Assumption
Pathway School**



ESTABLISHED 1932

DSA School types



Type of Schools	Discretionary Places
Schools with IP or SIS (NUSHS, SST & SOTA)	Up to 100% (IP schools admitted up to 50%)
Independent Schools (without IP)	20%
Autonomous Schools (without IP)	10%
Niche Programme School	5%

STEPS IN THE DSA-SEC EXERCISE

Period

FROM NOW ONWARDS

Note:

- (a) The application deadline for each DSA secondary school may differ.
- (b) DSA secondary schools will publish their latest selection criteria on their websites in **May**.

Process

GATHERING INFORMATION ON SCHOOLS

Student obtains information on DSA secondary schools through the following:

- check the schools' websites,
- call the schools, and/or
- visit the schools

APPLICATION

Student checks with DSA secondary school(s) that he/she is interested in for more information on application procedures etc.

SELECTION BY SCHOOLS

Shortlisted student goes for selection tests/camps or interviews at the DSA secondary school(s).

SELECTION OUTCOME

Student receives outcome of application from the DSA secondary school(s) he/she has applied to (i.e. Confirmed, waiting list or rejected), by end August.

SCHOOL PREFERENCE INDICATION

Student may submit his/her preference up to three DSA secondary schools.

Student can only amend or withdraw his/her submitted school preferences before the end of Exercise School Preference stage. Any amendment or withdrawal from the exercise will not be allowed after the Exercise School Preference stage.

RESULTS

- Student collects his/her DSA allocation result together with his/her PSLE results.
- Student who is unsuccessful in the DSA-Sec Exercise will participate in the S1 Posting Exercise.

JULY – AUGUST

(Stage 1: Selection Stage)

OCTOBER

(Stage 2: Exercise School Preference Stage)

NOVEMBER

(Stage 3: Results Release Stage)

DIRECT SCHOOL ADMISSION TO SECONDARY ONE



Ministry of Education
SINGAPORE



Produced By:

Pupil Placement Section
School Placement and Scholarships Branch
Student Placement and Services Division

Ministry of Education

1 North Buona Vista Drive, Singapore 138675
<https://www.moe.gov.sg/admissions/direct-admissions/dsa-sec>
Customer Service Centre Telephone: 6872 2220



DIRECT SCHOOL ADMISSION SECONDARY (DSA-SEC) EXERCISE

What is DSA-Sec?

The DSA-Sec Exercise was introduced by the Ministry of Education in 2004. It seeks to promote holistic education and provide students an opportunity to demonstrate a more diverse range of achievements and talents in seeking admission to a secondary school.

This is an admission exercise to allow participating secondary schools to select some Primary Six (P6) students for admission to Secondary One (S1), based on their achievements and talents, and before the Primary School Leaving Examination (PSLE) results are released.

This DSA-Sec Exercise provides an alternative avenue for some P6 students to be considered for admission to secondary schools. P6 students can choose whether or not to participate in the DSA-Sec Exercise. For the majority of P6 students (80-90% of each P6 cohort) who chooses not to participate in the DSA-Sec Exercise, they will continue on to participate in the S1 Posting Exercise which is conducted immediately after the release of the PSLE results.

How does it work?

Participating secondary schools may select students with diverse academic and non-academic achievements and talents before they sit for the PSLE. While upholding the principles of transparency and meritocracy, these secondary schools select a certain percentage of their student intake for admission outside the S1 Posting Exercise.

Who can apply?

P6 students can apply for the DSA-Sec Exercise for admission to S1 the following year. Students who have opted for a school under DSA-Sec Exercise must achieve PSLE results that would enable them to be eligible for admission to a course being offered by their opted DSA-Sec schools (e.g. if the DSA-Sec school offers only Express stream, then the student must have achieved a PSLE result that enables him/her to be eligible for admission to the Express stream). Students who are currently studying in secondary schools are not allowed to apply for the DSA-Sec Exercise.



What to consider before applying?

Interested P6 students should visit the DSA-Sec school's website to learn more about the school's DSA selection criteria and programmes. They should consider their strengths and apply to the school(s) that best caters to their needs.

Please refer to the exercise steps on the last page of this brochure for more information.

Students who opt for and are successfully allocated to their DSA school will not be allowed to participate in the annual S1 Posting Exercise to opt for secondary school as a place would have been reserved for them in the allocated DSA school. Similarly, they will not be allowed to transfer to another school after the release of the PSLE results. They are expected to honour the commitment to the posted DSA school for the duration of the programme admitted to.

When to apply?

The application period for each DSA secondary school may differ. Students should check the schedule from the schools' websites or contact the schools directly for the exact dates for this year's exercise.



Visit <https://www.moe.gov.sg/admissions/direct-admissions/dsa-sec> for the list of participating secondary schools in the previous year and more information regarding the DSA-Sec Exercise. Updated information on participating schools and exact dates for the exercise will be published in **May**.





ESTABLISHED 1932

DSA Process

Application Stage

- Application deadline for each DSA-Sec School is different
- Check school website
- Call / Visit the school for more information

Selection Stage

- Beginning Term 3
- DSA School will inform shortlisted candidates to take selection test/interview
- Selection Outcome will be released end Aug

Exercise School Preference Stage

- Pupils indicate their DSA-Sec school preference(s) for up to 3 schools in the DSA-Sec School Preference Form
- Takes place after the PSLE examination

Results Release Stage

- DSA-Sec allocation results is released together with the PSLE result



ESTABLISHED 1932

Find out more about DSA



- Visit MOE's DSA-Sec website
www.moe.gov.sg/education/admissions/dsa-sec/
- Visit the websites of participating schools through
<http://www.moe.gov.sg/education/admissions/dsa-sec/participating-schools/>



ESTABLISHED 1932

Considerations in Choosing a Secondary School

- Previous year's posting aggregate ranges of the schools
- Distance from home
- Academic performance of the child
- Programmes and schemes in the schools
- Special needs of the child
- Cut-off point



ESTABLISHED 1932

T-Score (Transformed Score)



$$\text{T - Score} = 50 + \frac{10(X - m)}{s}$$

Raw mark obtained [X]

Average (mean) mark [m]

Spread of marks around the average mark
(standard deviation) [s].



T-Score Calculation

Child A's score for Mathematics – 90 (X)

Average score of cohort – 75 (m)

Standard Deviation - 20 (s)

Using the T-Score formula

$$\begin{aligned} T &= 50 + 10(X - m) / s \\ &= 50 + \frac{10 \times (90 - 75)}{20} \\ &= 50 + \frac{10 \times 15}{20} \\ &= 50 + 7.5 \\ &= 57.5 \end{aligned}$$

Child A's T-score for Mathematics is **57.5**



ESTABLISHED 1932

Calculation of T-Score (Example)



- Cohort's mean and standard deviation plays a big part in the difference in T-score

Child A's score for Mathematics – 90 (X)

Average score of cohort – 75 (m)

Standard Deviation – 20 (s)

$$\begin{aligned} T &= 50 + 10(X - m) / s \\ &= 50 + \frac{10 \times (90 - 75)}{20} \\ &= 50 + \frac{10 \times 15}{20} \\ &= 50 + 7.5 = 57.5 \end{aligned}$$

Child B's score for Mathematics – 90 (X)

Average score of cohort – 65 (m)

Standard Deviation – 20 (s)

$$\begin{aligned} T &= 50 + 10(X - m) / s \\ &= 50 + \frac{10 \times (90 - 65)}{20} \\ &= 50 + \frac{10 \times 25}{20} \\ &= 50 + 12.5 = 62.5 \end{aligned}$$



ESTABLISHED 1932

Aggregate T-Score



- A **sum of T-Scores** of all 4 subjects.
- **Ranking** of all candidates based on academic ability.
- Reflects the **level of difficulty** of different subjects & paper.



ESTABLISHED 1932

Aggregate T-Score



- Result from each paper is only the raw score.
- Computation of T-Score
 - Gives the **relative standing** of students' performance as compared to all other students in that subject.
 - **Compared to** his/her cohort peers.



ESTABLISHED 1932

Example of Aggregate T-Score



Subject	Raw score 100	Mean m	Std Deviation SD	Transformed score
EL 1	80	50	20	65
MT	90	50	19	71
MA	90	60	15	70
SC	80	60	15	63
Aggregate T-Score				269



ESTABLISHED 1932

OUR PSLE RESULTS 2016



Percentage of pupils from standard
stream placed in secondary schools

98.5%



ESTABLISHED 1932

OUR PSLE RESULTS 2016



Percentage of standard stream
students eligible for express stream

53.9%



ESTABLISHED 1932

DSA - SEC



Names	Eligible DSA Sec School(s)	Category
KHOO YU XUAN, DIONNE	RIVER VALLEY HIGH SCHOOL	ACADEMIC
TYO XIANG YI	RIVER VALLEY HIGH SCHOOL	CCA
VIDEL XAVIER	SCHOOL OF THE ARTS, SINGAPORE	ACADEMIC
ESMOND EE JUN WEI	SCHOOL OF SCIENCE AND TECHNOLOGY, SINGAPORE	ACADEMIC
FAN JIA QI	RAFFLES GIRLS' SCHOOL (SEC)	ACADEMIC
QIAN ANNE PAN	SCHOOL OF THE ARTS, SINGAPORE	ACADEMIC
CHIAM JING HUI	SCHOOL OF SCIENCE AND TECHNOLOGY, SINGAPORE	ACADEMIC
FUNG EN RUI	BUKIT PANJANG GOVT HIGH SCH	CCA



ESTABLISHED 1932

DSA - SEC



Names	Eligible DSA Sec School(s)	Category
LIM JIA SHENG, ZACHARY	ST. JOSEPH'S INSTITUTION	SPORTS
ZAIRA ANAKKOT SHAMEER	FUHUA SECONDARY SCHOOL	LEADERSHIP
WANG RYAN JUSTIN	NAN HUA HIGH SCHOOL	CCA
LIM JUN YIE	JURONG SECONDARY SCHOOL	CCA
KWOK TING JUN SHARON	JURONG SECONDARY SCHOOL	CCA
ENG MING YAO	UNITY SECONDARY SCHOOL	CCA
MUHAMMAD AFIQ BIN YUSMAN	UNITY SECONDARY SCHOOL	CCA
SEAH RUI FENG MARCUS	UNITY SECONDARY SCHOOL	CCA



ESTABLISHED 1932



P6 CALENDAR OF EVENTS



ESTABLISHED 1932

P6 Events



Event / Activities	Day / Dates
P6 PFT (5 items)	Tuesday 11 April 2017
P6 PFT (1.6km)	Tuesday 18 April 2017
P6 PTM	Friday 26 May 2017
P6 NE Grid Defender Quiz	Friday 28 July 2017
Secondary School Talks	Immediately after PSLE (during curriculum hours)
ICT Training	Post PSLE (during curriculum hours)
P6 Graduation Ceremony	Tuesday 14 November 2017



ESTABLISHED 1932

P6 SCHOOL EXAMINATION DATES



Assessment	Time Frame	Weightage
CA1	Term 1 Week 9	10%
SA1 Oral	Term 2 Week 5	30%
SA1 Written	Term 2 Week 8	
Prelim Oral	Term 3 Week 3	60%
Prelim Written	Term 3 Week 8	



ESTABLISHED 1932

2017 PSLE EXAMINATION TENTATIVE DATES



Description	Dates
Registration Exercise	6 – 27 March 2017
Oral Examination	17–18 Aug 2017
Listening Comprehension	15 Sep 2017
Written Examination	28 Sep – 4 Oct 2017
Marking Exercise	19 – 24 Oct 2017



ESTABLISHED 1932

Tips for Parents



- Be **supportive** of your child
- **Value** his/her effort and not results alone
- Give **positive** reinforcement
- Help your child **manage time**, especially supervision on mobile devices / computer usage

School Information Service – <http://sis.moe.gov.sg/>

Parents in Education (PiE) website – <http://parents-in-education.moe.gov.sg/>



ESTABLISHED 1932

Tips for Parents



- **Set goals** with your child - PSLE results, secondary school
- **Work closely** with teachers - ensure your child attends programmes in school

School Information Service – <http://sis.moe.gov.sg/>

Parents in Education (PiE) website – <http://parents-in-education.moe.gov.sg/>

Balance and manage activities



It's all about
balance.



www.pHreshProducts.com



ESTABLISHED 1932

Thank you



**for
partnering us for the interest
of our pupils' learning !**



ENGLISH LANGUAGE AND FOUNDATION ENGLISH

English Language and Foundation English



Examination Format		EL	FEL
Paper 1	Writing	27.5%	26.7%
Paper 2	Language Use & Comprehension	47.5%	40%
Paper 3	Listening Comprehension	10%	13.3%
Paper 4	Oral Communication	15%	20%
Total		100%	100%

PSLE EL Syllabus

PAPER	COMPONENT	Item Type	No. of Items	Marks	Weighting %
1 Writing	Situational Writing	OE	1	15	27.5
	Continuous Writing	OE	1	40	
2 Lang Use and Compre	Grammar	MCQ	10	10	47.5
	Vocabulary	MCQ	5	5	
	Vocabulary Cloze	MCQ	5	5	
	Visual Text Comprehension	MCQ	8	8	
	Grammar Cloze	OE	10	10	
	Editing (Spelling & Grammar)	OE	12	12	
	Comprehension Cloze	OE	15	15	
	Synthesis/Transformation	OE	5	10	
	Comprehension OE	OE	10	20	
3 Listening	Listening Comprehension	MCQ	20	20	10
4 Oral	Reading Aloud	OE	1	10	15
	Stimulus-based Conversation	OE	1	20	

PSLE FEL Syllabus

PAPER	COMPONENT	Item Type	No. of Items	Marks	Weighting %
1 Writing	Situational Writing	OE	1	10	26.7
	Continuous Writing	OE	1	30	
2 Lang Use and Compre	Grammar	MCQ	8	8	40.0
	Punctuation		2	2	
	Vocabulary		5	5	
	Visual Text Comprehension		5	5	
	Form Filling	OE	5	5	
	Editing for Grammar		6	6	
	Editing for Spelling		6	6	
	Sentence Completion		5	5	
	Synthesis		3	3	
	Comprehension Cloze		5	5	
	Comprehension OE (A & B)		7	10	
3 Listening	Listening Comprehension	MCQ	20	20	13.3
4 Oral	Reading Aloud	OE	1	10	20
	Stimulus-based Conversation		1	20	

Paper 1 – Writing



Part 1 – Situational Writing

Pupils write a short functional text to suit the purpose, audience and context of a given situation

Part 2 – Continuous Writing

EL (1h 10 min)	FEL (1h 10 min)
Pupils write a composition of at least 150 words in continuous prose on a given topic	Pupils write a composition of at least 120 words in continuous prose based on a series of pictures with helping words provided
3 pictures will be provided on the topic offering different angles of interpretation	

Paper 2 – Language Use & Comprehension



Pupils use language correctly and comprehend visual and textual information.

Booklet A (Total time: 1h 50 min)	Booklet A (Total time: 1h 20 min)
EL	FEL
Grammar Vocabulary Vocabulary Cloze Visual Text Comprehension	Grammar Punctuation Vocabulary Visual Text Comprehension
Booklet B	Booklet B
EL	FEL
Grammar Cloze Editing for Spelling & Grammar Comprehension Cloze Synthesis/Transformation Comprehension Open-ended	Form Filling Editing for Grammar & Spelling Sentence Completion Sentence Synthesis Comprehension Cloze Comprehension Open-ended

Paper 3 – Listening Comprehension



EL (45 min)	FEL (45 min)
<p data-bbox="146 432 946 706">-Listening texts may be in the form of news items, announcements, advertisements, instructions, explanations, conversations, speeches and stories.</p> <p data-bbox="146 775 946 875">-Graphic representations will be used for the first seven items.</p>	<p data-bbox="1014 432 1816 646">-Listening texts may be in the form of announcements, advertisements, instructions, explanations, speeches, conversations and stories.</p> <p data-bbox="1014 775 1816 875">-Graphic representations will be used for the first six items</p>

Paper 4 – Oral Communication



EL	FEL
Reading Aloud -Pupils pronounce and articulate words clearly. -Pupils read fluently with appropriate expression and rhythm.	Reading Aloud -Pupils pronounce and articulate words clearly. -Pupils read fluently with appropriate expression and rhythm.
Stimulus-based Conversation -Pupils give a personal response to a visual stimulus and engage in a conversation on a relevant topic	Stimulus-based Conversation -Pupils give a personal response to a visual stimulus and engage in a conversation on a relevant topic

Preparation for PSLE English



- Look through corrected assignments and learn from the mistakes. Take care not to repeat the mistakes.
- Seek clarifications with the teachers when in doubt.
- Set the time frame (exam duration) for practice papers done at home.
- Practise slow, close and in-depth reading of comprehension passages and answer questions with precision.
- Speak clearly and practise reading aloud.
- Be consistent and disciplined in self-revision.



MATHEMATICS

PSLE Standard Math Format



Paper	Booklet	Item Type	No. of Questions	No. of Marks per Question	Weighting	Duration
1	A	Multiple - Choice	10	1	10%	50 min
			5	2	10%	
	B	Short Answer	10	1	10%	
			5	2	10%	
2		Short Answer	5	2	10%	1 h 40 min
		Structured/ Long Answer	13	3, 4 , 5	50%	
Total			48	-	100%	2 h 30 min

PSLE Foundation Math Format



Paper	Booklet	Item Type	No. of Questions	No. of Marks per Question	Weightings	Duration
1	A	Multiple - Choice	10	1	10%	1 h
			10	2	20%	
	B	Short Answer	10	2	20%	
2		Short Answer	10	2	20%	1 h 15 min
		Structured/ Long Answer	8	3, 4 , 5	30%	
Total			48	-	100%	2 h 15 min

Item Types



Multiple-choice Question

- For each question, four options are provided of which only one is the correct answer. A candidate has to choose one of the options as his/her correct answer.

Short-answer Question

- For each question, a candidate has to write his/her answer in the space provided. Any unit required in an answer is provided and a candidate has to give his/her answer in that unit.

Structured / Long-answer Question

- For each question, a candidate has to show his/her method of solution (working steps) clearly and write his/her answer(s) in the space(s) provided.

Mathematics



- Both papers will be scheduled on the same day with a break between the two papers.
- **Paper 1** comprises two booklets. The **use of calculators is not allowed.**
- **Paper 2** comprises one booklet. The **use of calculators is allowed.**
- Pupils have to bring their mathematical instruments.

Preparation for PSLE Mathematics



- Practice to attain mastery. Practice must include repetition and variation to achieve proficiency and flexibility.
- Expose the pupils to more challenging word problems to build up their competencies and confidence levels.
- Expose them more to exam-type questions to better prepare them for exams.



SCIENCE

Purpose of the PSLE Science Paper



- The PSLE Science Paper ***assesses pupils' attainment in Science*** with ***respect to the aims of Primary Science Education*** as stated in the 2014 Science (Primary) syllabus.
- The assessment includes ***recall of scientific facts, concepts and principles***, and the ***application of process skills in various contexts***.

Assessment Objectives (Science)



The objectives describe the ***skills and abilities*** which pupils are expected to demonstrate.

1. Knowledge with Understanding
of ***scientific facts, concepts and principles.***

Assessment Objectives (Science)



2. Application of Knowledge and Process Skills

a. Apply scientific facts, concepts and principles to new situations.

b. Use one or a combination of the following basic process skills:

- Observing
 - Comparing
 - Classifying
 - Using apparatus and equipment
 - Communicating
 - Inferring
- Predicting
 - Analysing
 - Generating possibilities
 - Evaluating
 - Formulating hypothesis

P6 Science Exam Format



Booklet	Item Type	Number of questions	Number of marks per question	Total Marks
A	Multiple-choice	28	2	56
B	Open-ended	13	2, 3, 4,5	44

Duration: 1h 45 min

P6 Foundation Science Exam Format



Booklet	Item Type	Number of questions	Number of marks per question	Total Marks
A	Multiple-choice (3 options only)	18	2	36
B	Structured (E.g. 'Fill in the blanks', 'Matching', etc).	6 – 7	2 / 3	14
	Open-ended	5 – 6	3 / 4	20

Duration: 1h 15 min

* A word list is provided.

Preparation for PSLE Science

- **Listen with understanding** during lessons.
 - **Ask and seek** information if in doubt.
 - Use **'Stop, Think, Go!'** to answer MCQ and open-ended questions and practise process skills.
 - Be **'Spot On!'** in answering open-ended questions.
 - Use concept maps to **'Show your Thinking'**.
 - Manage time wisely.
- Never give up!**



Stop, Think, Go



Listen with
Understanding



Ask and Seek



Spot On



Show your Thinking



Never Give Up



P6 Parents' Briefing cum Workshop for Mother Tongue languages

Date: Friday 17 February 2017

Time: 3.00 p.m. to 5.00 p.m.