

P5 Parents' Briefing

10 January 2020

Xingnan Primary School

P5 Briefing Slides

Parents' Briefing Slides will be uploaded onto school website.
<https://xingnanpri.moe.edu.sg>



The screenshot displays the Xingnan Primary School website. The top navigation bar includes links for Home, About Us, School Information, Programmes, CCA, Parents' Corner, and Achievements. The school's logo and name, 'Xingnan Primary School', are prominently featured, along with the motto 'A Self-directed Learner, A Gracious Citizen'. A search bar is located on the right side of the header. The main content area is titled 'Our People' and contains a paragraph describing the school's teaching staff and administrative team. A sidebar on the right lists various links, including a welcome note from the Principal, key personnel, and a photo gallery.

Home About Us School Information Programmes CCA Parents' Corner Achievements

 **Xingnan Primary School**
A Self-directed Learner, A Gracious Citizen

search

Home > About Us > Our People

Our People

Xingnan Primary School has a strong and supportive teaching staff, para-professionals as well as an effective executive and administrative team. Working together as a team, our people creates the vibrant environment we desire, to support the teaching and learning for our pupils and brings the programmes offered here in Xingnan to greater heights.

- Welcome note from the Principal
- **Our People**
 - Key Personnel
 - P1 - P6 Form Teachers
 - Allied Educators
 - Executive & Administrative Staff
 - SAC 2016
 - Alumni
 - Parent Support Group
- Photo Gallery
- School Overview
- Contact Us

Agenda

- Introduction to level
- Objectives of briefing
- Information on primary school education
- Direct-School Admission (DSA)
- New PSLE Scoring System
- PSLE 2019 Results
- Address by School Leader
- Supporting your child's education journey and well-being

Introduction

Year Head



Mrs Tina Ng
ng_tina@schools.gov.sg

Assistant AYH



Mrs Isabel Soo
tan_kah_cheng@schools.gov.sg

P5 Form Teachers



5A Form Teacher
Mrs Isabel Soo



5A Form Teacher
Ms Chew Bee Hoon



5B Form Teacher
Mr Joseph Ang



5B Form Teacher
Mdm Sia Chu Kwee



5C Form Teacher
Ms Connie Tan



5C Form Teacher
Mdm Sumitha



5C Form Teacher
Mdm Ruby Ng

P5 Form Teachers



5D Form Teacher
Mr Pierre E



5D Form Teacher
Mr Benjamin Wong



5E Form Teacher
Ms NurMillah



5E Form Teacher
Ms Sumathi



5F Form Teacher
Mr Abdul Wahab



5F Form Teacher
Mrs Santha Padman

P5 Mother Tongue Teachers



Ms Chew Bee Hoon



Mdm Tee Siew Ping



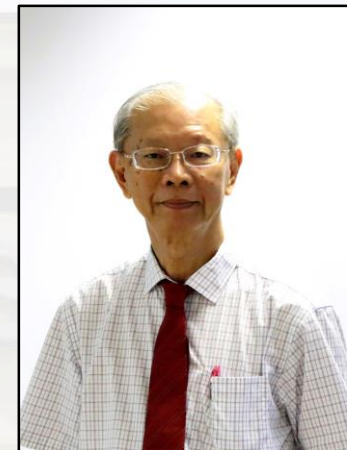
Mr Ma Chen



Mdm Sia Chu Kwee



Mdm Tan Li Cheng



Mr Ho Sau Ken

P5 Mother Tongue Teachers



Mr Taufek



Mdm Li Jing



Ms Mirna



Ms Rosneayu



Mr Tan Chong Hian



Ms Sumathi

OBJECTIVES OF BRIEFING

- Provide an opportunity for parents to interact and understand how they can work in partnership with teachers to support the pupils
- To familiarise parents on teachers' expectations of pupils

Xingnan Primary School

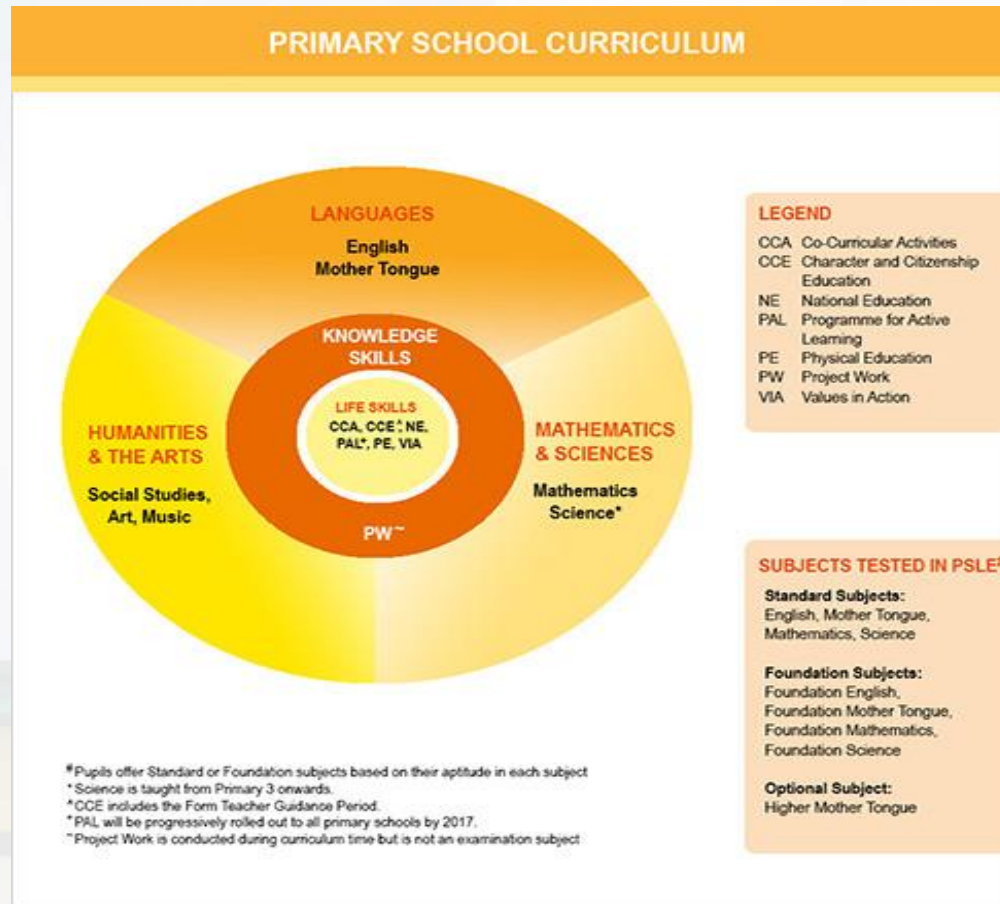
PRIMARY SCHOOL EDUCATION

Preparing Your Child For Tomorrow



Your Child's Best Interests at Heart

6 Years of LEARNING @ XINGNAN



Cognitive

Morale

Aesthetics

Leadership

Physical

Social &
Moral

Useful Resource

<https://www.moe.gov.sg/>

EDUCATION>PRIMARY>PRIMARY SCHOOL EDUCATION BOOKLET>4 LANGUAGES

Xingnan Primary School



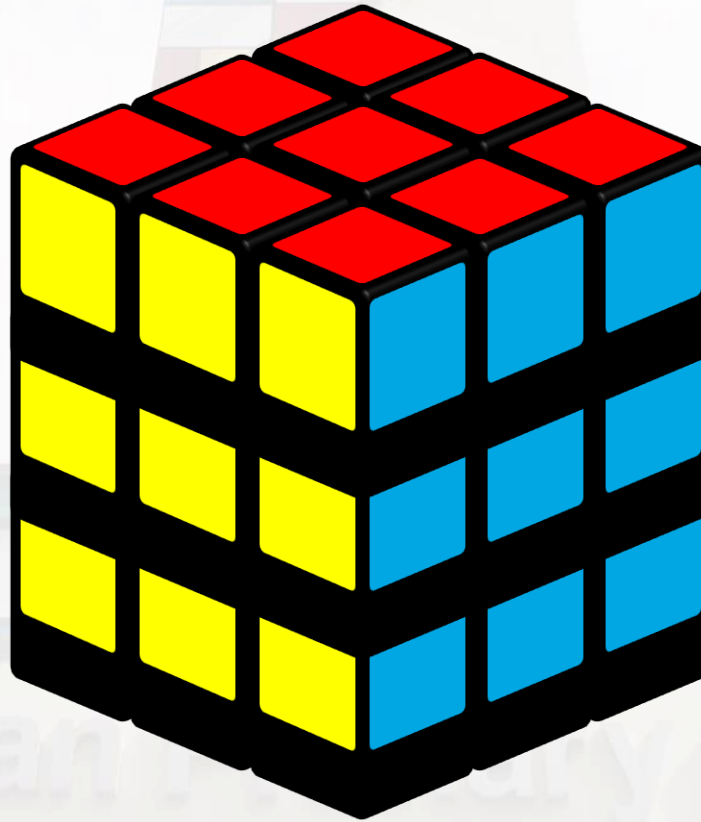
**Preparing for the
21st Century**

**Preparing for the
next level of education**

x^3 Learning Years

xTend (P5-P6)

Transforming
Experiences through
iNnovation and
Discovery



xPlore (P3-P4)

Purposeful Learning
Opportunities through
Resource-Rich Environments

xCite (P1-P2)

Curriculum Integration
through Thematic
Experiences

Xingnanian Holistic Learning Experience

Curricular

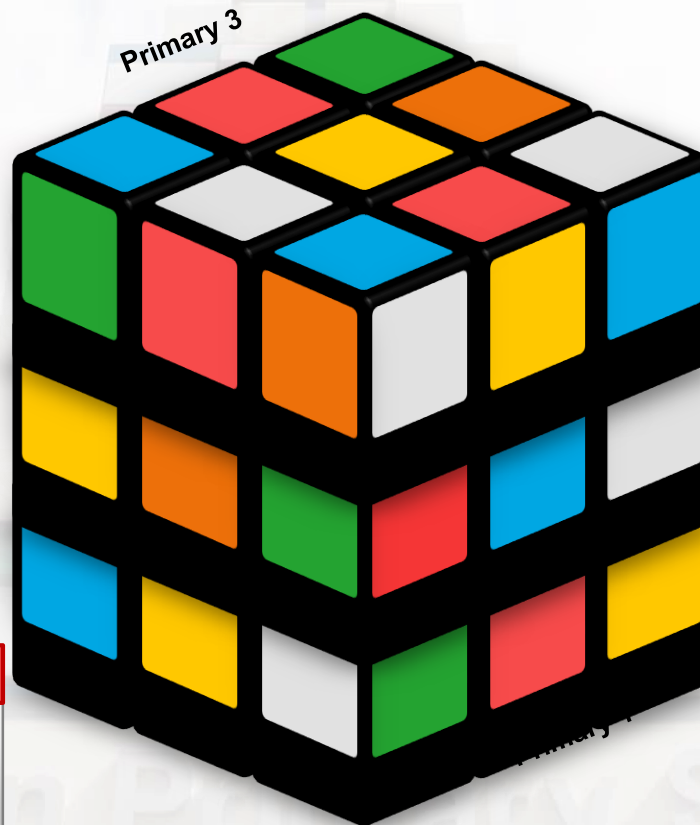
English, SS, Maths, Science, MTL, PAM

Co-Curricular

CCE, CCA, MOCCA, PAL, FTGP, NE, Sexuality Education, ICT, Pastoral Care, Leadership

Student Development

IPW, Learning Journey, Innovation, VIA



School Events

Carnival, Sports Day, MuzArt, National Day, Teachers' Day

Health and Safety

Fire Drill, Health Talks, Safety Talks

QUALITY SCHOOL EXPERIENCE

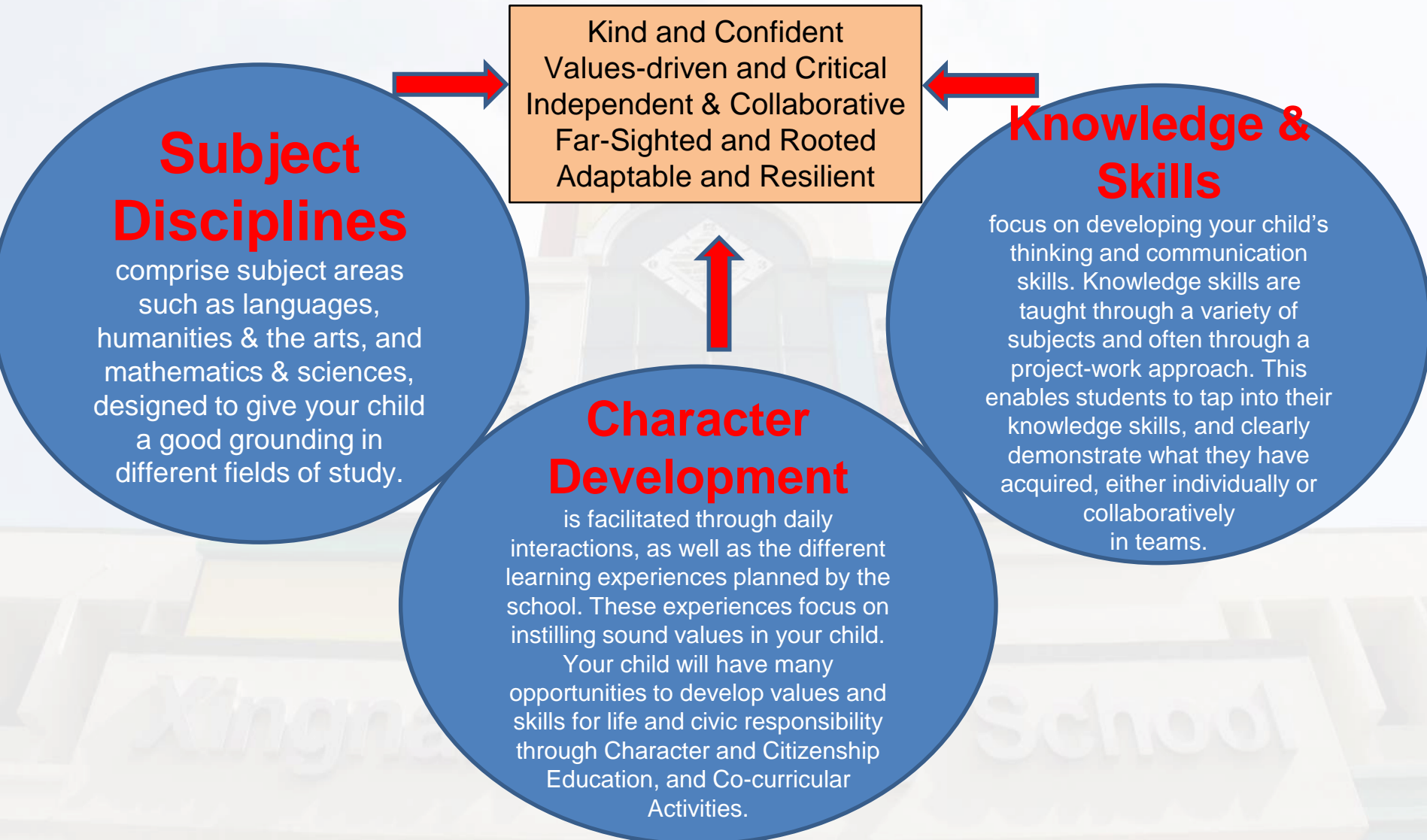
Xtend

P5 & P6 Learning Years @ **X**ingnan

transforming **e**xperiences
through

i**n**novation and **d**iscovery

Curriculum for well-rounded learning



EXPECTED OUTCOMES

P5 Camp

Mother Tongue Fortnight

Learning Journeys

X-Space

Inter class Games

P5 NE Show

Festival Celebrations

Outdoor Activities

Being a Buddy

Overseas learning journey

Muzart

ENGLISH WEEK

IPW

Adventure Day

VIA

HBL

SCIENCE WEEK

MOCCA

Type of schools

Special Assistance Programme Schools (SAP)

Integrated Programme Schools

Independent Schools

Autonomous Schools

Schools with Niche Programmes

Specialised Schools

S'pore Sports School

NUS High School of Math & Science

School of the Arts (SOTA)

School of Science & Technology (SST)

North Light Assumption Pathway School

Entering a secondary school



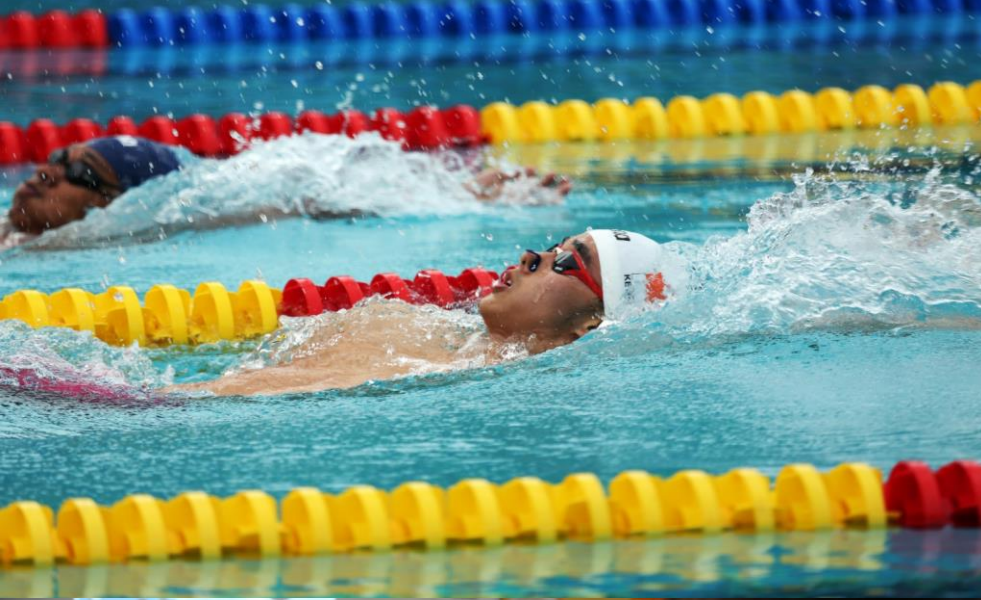
PSLE/S1 Posting Process

- Based on a student's **PSLE score**
- **Most students enter secondary schools this way**



DSA-Sec

- Based on a diverse range of **talents and achievements in specific academic subjects or non-academic areas, beyond what the PSLE recognises**
- Allows students to **access school programmes to develop their talents**



Direct School Admission for Secondary Schools (DSA-Sec)

What is DSA – SEC?

- Introduced by the MOE in 2004.
- Seeks to promote holistic education and provide students an opportunity to demonstrate a more diverse range of achievements and talents in seeking admission to a secondary school.
- Gives participating schools greater flexibility in their admission of students
- Adheres to key principles of **transparency** and **meritocracy**

What is DSA – SEC?

- Talents and achievements in both academic and non-academic areas can be considered for S1 admission.
- Each participating school sets its own criteria for selection, based on the academic and/or non-academic areas that the school emphasises.

Xingnan Primary School

What is DSA – SEC?

- Portfolios, trials, camps, interviews or tests
- Participating schools: SJI, NUS High, SST, SOTA, etc.
- Selection will be based on the pupils' achievements and talents before the PSLE results are released.

Angnan Primary School

DSA School Types

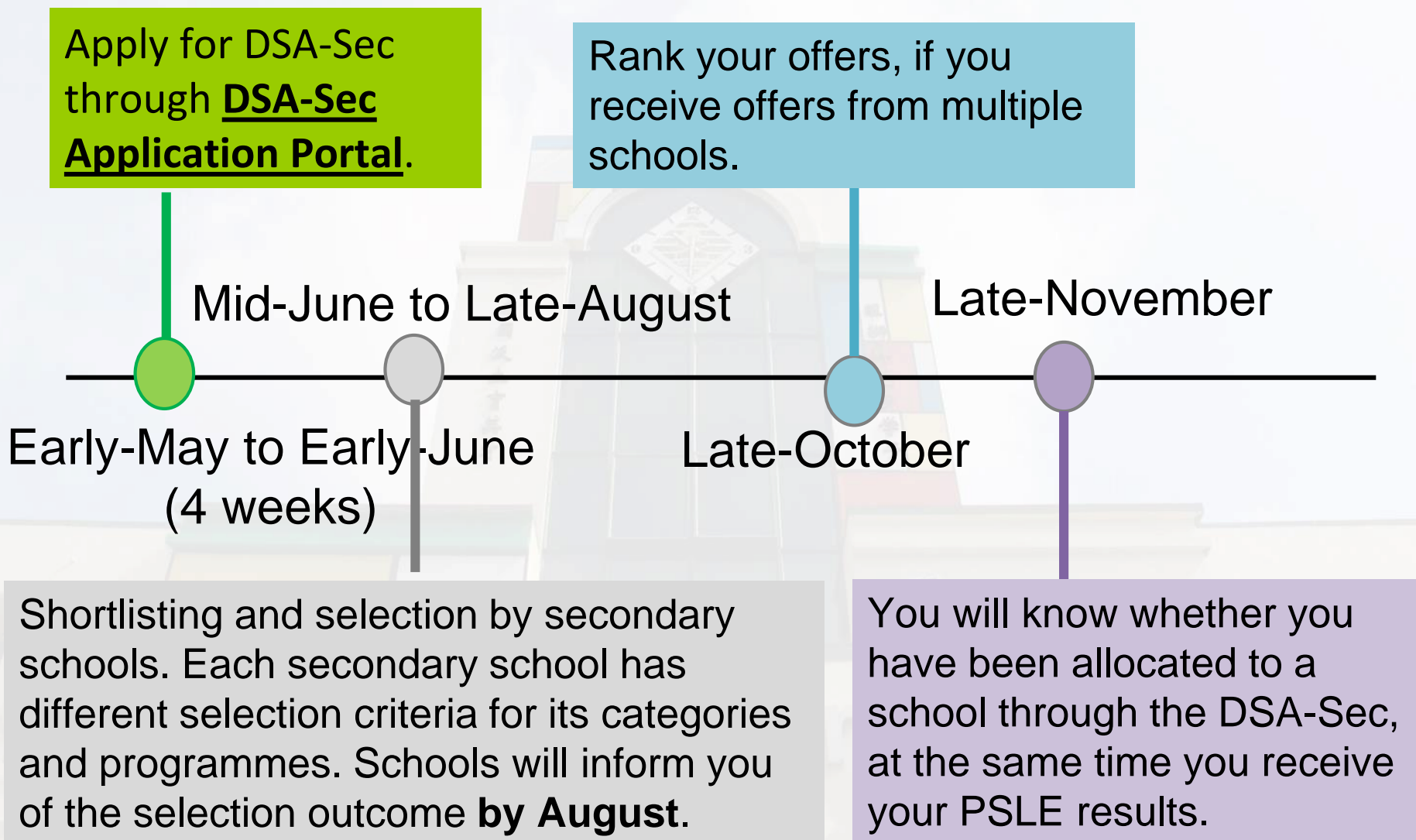
Type of Schools	Discretionary Places
Schools with IP or SIS (NUSHS, SST & SOTA)	Up to 100% (IP schools admitted up to 50%)
Independent Schools (without IP)	20%
Autonomous Schools (without IP)	10%
Niche Programme School	5%

Xingnan Primary School

A new DSA-Sec Application Portal

- To encourage students to tap on the expanded DSA opportunities, the DSA-Sec application process has been simplified
- From the **2019 DSA-Sec**, students were able to apply for DSA online through a new centralised **DSA-Sec Application Portal**, using a common application form.
- The portal simplifies and streamlines the DSA application process, making it convenient for all students.

What is the timeline for DSA-Sec?



More information about DSA...

- Visit MOE's DSA-Sec website:
www.moe.gov.sg/education/admissions/dsa-sec/
- Visit the websites of participating schools through
<http://www.moe.gov.sg/education/admissions/dsa-sec/participating-schools/>

Xingnan Primary School

The background of the slide is a faded, low-angle photograph of a large, multi-story school building. The building has a central tower with a clock face and is surrounded by other wings. The sky is blue with some clouds. The text is overlaid on this background.

NEW PSLE SCORING SYSTEM

Kingnan Primary School

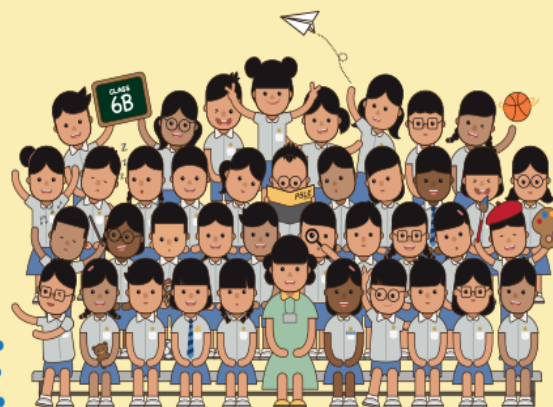
CHANGES TO THE PSLE SCORING AND SECONDARY ONE POSTING FROM 2021



Ministry of Education
SINGAPORE

[PSLE SCORING \(UPDATED\)](#) | [S1 POSTING](#) | [FAQS \(UPDATED\)](#) | [RESOURCES](#) | [SHARE YOUR THOUGHTS](#)

CONFIDENT LEARNERS READY FOR THE FUTURE



Why this Change?

What is the PSLE and
what is it for?

What does it mean for
students?

What will happen for the next
few years before 2021?

New PSLE Scoring System

From 2021 onwards, the PSLE will be scored with wider bands and the scores will reflect the student's individual performance and not his performance relative to his peers.

<https://www.moe.gov.sg › microsites › psle › psle-scoring>

Xingnan Primary School

New PSLE Scoring System

AL	RAW MARK RANGE
1	≥ 90
2	85 – 89
3	80 – 84
4	75 – 79
5	65 – 74
6	45 – 64
7	20 – 44
8	< 20

New PSLE Scoring System

Foundation Level Subjects

FOUNDATION LEVEL AL REFLECTED ON RESULT SLIP	FOUNDATION RAW MARK RANGE	EQUIVALENT STANDARD LEVEL AL
A	75-100	6
B	30-74	7
C	<30	8

New PSLE Scoring System

Scores to Reflect Student's Own Performance

The emphasis is on how well the student has learnt,
and not how well he has done compared to others.

We want our students to focus on their own learning
instead of trying to outdo others.

Xingnan Primary School

New PSLE Scoring System

Presentation of Results in Achievement Levels (AL)

Holistic Development Profile (HDP)

<u>Subject</u>	<u>Mark</u>	<u>AL</u>
English Language	85	2
Mathematics	75	4
Science	65	5
Mother Tongue Language	55	6

Total AL Score: 17

New PSLE Scoring System

Eligibility for Secondary School HMTL

ELIGIBILITY CRITERIA FOR SECONDARY SCHOOL HMTL

PSLE Score of 8 or better

OR

**PSLE Score of 9 to 14
inclusive; and achieving**

- i) AL 1/AL 2 in MTL or**
- ii) Distinction/Merit in HMTL**

Subject-based banding (SBB)



Education Minister Ong Ye Kung visiting a Secondary 1 form class with students from different streams at Ping Yi Secondary School

Subject-based banding (SBB)



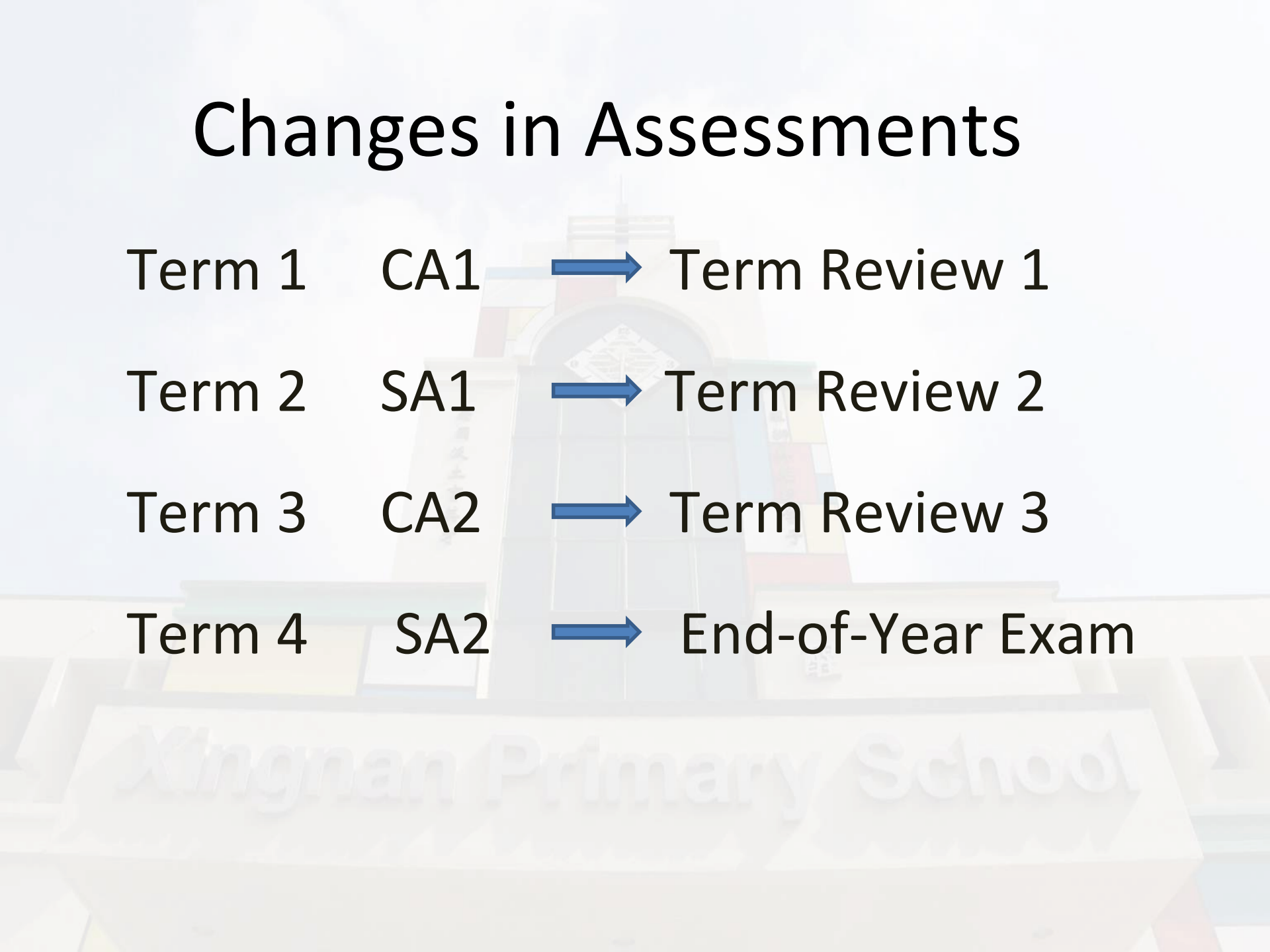
DESIRE TO LEARN

I want to learn more... I am quick with numbers and mental calculations.

I didn't expect to be able to take Express subjects. I thought Normal (Academic) is Normal (Academic), and there is nothing you can do about it." LIM TIE, a Secondary 2 student who is studying Express-level mathematics, geography, history and science this year.

Kingnan Primary School

Changes in Assessments



Term 1	CA1	→	Term Review 1
Term 2	SA1	→	Term Review 2
Term 3	CA2	→	Term Review 3
Term 4	SA2	→	End-of-Year Exam

Xingnan Primary School



ESTABLISHED 1932

Address by School Leader

Xingnan Primary School



PSLE

**CONGRATULATIONS
to our 2019 P6
Xingnanians!**



Xingnan Primary School

DSA – SEC

**PERFORMING ARTS / INTEGRATED PROGRAMME /
SCIENCE, TECHNOLOGY, ENGINEERING, MATHS**

NATIONAL JUNIOR COLLEGE;
HUA YI SECONDARY SCHOOL;
NAN HUA HIGH; SCHOOL OF SCIENCE AND
TECHNOLOGY, SINGAPORE

SHEE WEI XUAN; NG WEI LE, DYLAN;
WONG ZHENG ZHONG, JUSTIN; PAY WEI EN;
TYO YANG YI; GOH YAN SHI; SELVAKUMAR
SRINIVADHARSHAN

DSA – SEC

SPORTS AND GAMES

FAIRFIELD METHODIST SCHOOL (SECONDARY); HUA YI SECONDARY SCHOOL; CEDAR GIRLS' SECONDARY SCHOOL; UNITY SECONDARY SCHOOL; JURONG SECONDARY SCHOOL; XINMIN SECONDARY SCHOOL

MARCUS KHOO JUN PUAY; OOI JING HUI, FANNICE; QUEA JING HAN; CHAN JIAN TING, DAREN; LYNN TAN SI YI; XAVIER LIM CHOON KAI; JOLIN GOH; HENG YIXUAN; TEW ZHI JIE; NG YONG ENN; LOO YU WEN; NEO QI EN; KAM HOOI QIAN

DSA – SEC

LEADERSHIP AND UNIFORMED GROUPS

HUA YI SECONDARY SCHOOL

DAANISSTA R SUBRAMANIAM

Xingnan Primary School

Percentage of pupils placed in
secondary schools:

Standard: 100%

All: 98%

Xingnan Primary School

Percentage of pupils eligible for
express stream:

58%

Xingnan Primary School

Total number of pupils taking 4S: **185**

Number of pupils with:

$2As/A^*s$ – **28**

$3As/A^*s$ – **20**

$4As/A^*s$ – **34**

$4As/A^*s$ + HMT Distinction – **4**

No of pupils with 250 and above - 15

SUPPORTING YOUR CHILD'S EDUCATION JOURNEY

What parents can do

Xingnan Primary School

FAMILY &
FRIENDSHIPS



ESTABLISHED 1932

ACADEMICS



SCHOOL
ACTIVITIES

INTERESTS &
HOBBIES

Transition from P5 to P6

- Journey towards the PSLE
- Increased **rigour** and **demand** from Primary 5
- Continual **participation** in CCA and leadership roles (Semester 1)
- Continual emphasis on **holistic development** including **character building**
- Greater emphasis on **mental well-being** and **positive relationships**

Tips for Parents

- Be **supportive** of your child
- **Value** his/her effort and not results alone
- Give **positive** reinforcement
- Help your child **manage time**, especially supervision on mobile devices / computer usage
- **Balance** and **manage** activities - enrichment and CCA
- **Set goals** with your child - PSLE results, choice of secondary school
- **Work closely** with teachers: ensure your child attends programmes in school

School Information Service – <http://sis.moe.gov.sg/>

Parents in Education (PIE) website – <http://parents-in-education.moe.gov.sg/>



Our Children's Well-Being Matters

A PRESENTATION BY
MINISTRY OF EDUCATION, SINGAPORE

For Parents of
Primary 5 and 6 Pupils

Family Time is important ...

for **fostering** strong family **bonds** to support your child's **character development**

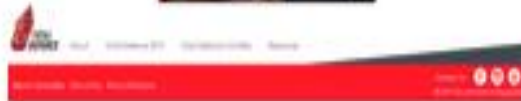
to be **involved** in your child's **learning experiences** to help him or her develop **social and emotional skills**

for **encouraging** your child to have **confidence** and build **resilience**



Resources to Engage Your Child at Home

Total Defence Resource Kit



Total Defence Resource Kit
by Parent for Parents in 2019
@ www.totaldefence.sg



4 Issues Yearly
(January, March, June, September)

 <https://kindville.kindness.sg/kindville-times>



Play the SGUnite!
2.0 card game as a
family to learn more
about the
importance of Total
Defence

Making Family Time S.A.F.E

Support your child through
his/her transitions and
nurture his/her social and
emotional skills through
these tips:



[https://tinyurl.com/
support-in-transitions](https://tinyurl.com/support-in-transitions)

Support
Affirm
Familiarise
Empathise

Supporting your child's transition through

Primary 5/6

Build a caring home environment to nurture the social and emotional skills
of your child using these S.A.F.E. tips.

SUPPORT

- **Encourage** your child to **talk to a trusted adult** for guidance.
E.g. Family members, school counsellors and teachers.
- **Help** your child **understand decisions made and actions taken**. **Share the reasons** for them.
- **Keep rules short and realistic**.
E.g. No handphones allowed during meal times.

AFFIRM

- **Recognise** his/her demonstration of **good values or social skills**.
E.g. Respect or good time-management.
- **Praise** your child's **efforts regularly**.
Only scolding him/her without providing any justified praise at other times can be demoralizing.

EMPATHISE

- **Show** that you **understand** your child's **concerns**.
Be flexible in guiding your child when necessary.
E.g. Vary your voice tone when you talk to him/her at different times and circumstances.
- **Teach with less talk and more role-modelling**. Children learn a lot by simply watching.

FAMILIARISE

- **Find out** what Primary 5 and 6 is like for students these days. **Moderate your expectations** according to your **child's own strengths and development**.
- **Share information** on physical changes during **puberty**; include the range of emotions that may accompany it.



Spend Time Chatting.
Use T.A.D.

Talk

Talk about things that friends might pressure him/her to do, which can be harmful.
E.g. risky dares; deciding to meet an 'online friend' in person; making online purchases

Ask

Ask your child about interests he/she would like to explore, and what he/she needs to do to develop them.
E.g. make time for practice; sign up for courses/lessons

Discuss

Discuss a variety of occupations that your child may be interested to explore.
E.g. chef, interior designer, housing agent.

QUICK TIPS

- **Listen** without being distracted. **Put aside** whatever you had been doing.
- **Be prepared to accept** your child's **views** even though you may not fully agree with them.

These tips may be used with addition of other approaches, it depends on each child's needs. Using these tips as part of your child's journey through the school years can help ease anxiety and worries, and build warmer and closer relationships at home.



Ministry of Education
SINGAPORE

Further Resources



<https://www.schoolbag.sg>
<https://go.gov.sg/sel-res-for-parents>



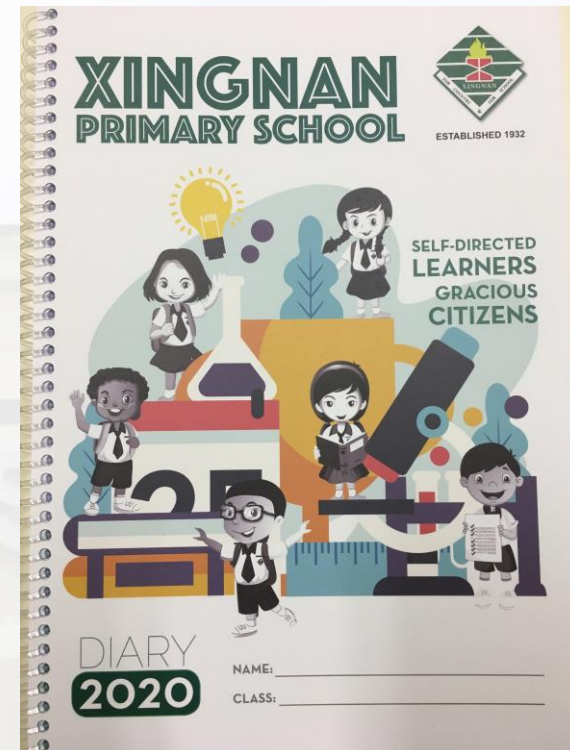


HOME-SCHOOL
PARTNERSHIP

Parent-School Partnership

1. Work with your child's teachers first

- Write your queries in the Pupil Diary
- Call and leave a message with the General Office (Tel: 6791 3679)
- [Email](#) the teachers
- To meet up with your child's teacher, make an appointment before coming to school.



Parent-School Partnership

2. Communicate well with your child

- Listen and talk to your child to understand his needs, interest, aspirations.
 - I. **Parents Gateway: School activities and programmes**
 - II. Snack time
- Make joint decisions - let your child know your final decision

Xingnan Primary School

Thank you!

