

WELCOME

P6 Parents' Briefing

17 January 2020

Xingnan Primary School

P6 Briefing Slides

Parents' Briefing Slides will be uploaded onto school website.

<https://xingnanpri.moe.edu.sg>



The screenshot shows the website of Xingnan Primary School. The top navigation bar includes links for Home, About Us, School Information, Programmes, Parents' Corner, Students, and Achievements. The school's logo and name, "Xingnan Primary School", are displayed, along with the motto "A Self-directed Learner, A Gracious Citizen". A search bar is located on the right. The main content area shows the breadcrumb "Home > Parents' Corner > Parents' Briefing Slides" and a list of briefing slides for 2019 and 2018. A sidebar on the right lists various school resources.

Home > Parents' Corner > Parents' Briefing Slides

Parents' Briefing Slides

- 2019 P2 Parents' Briefing 18 Jan 2019 (Hall)
- 2019 P2 Parents' Briefing 18 Jan 2019 (Eng)
- 2019 P2 Parents' Briefing 18 Jan 2019 (Math)
- 2019 P2 Parents' Briefing 18 Jan 2019 (MT)
- 2019 P3 Classroom Briefing Slides.pdf
- 2019 P3 General Briefing by Year Head
- 2019 P3 Parents Briefing (EngMAMT)
- 2019 P4 AYH Briefing
- 2019 P4 Classroom Parents Briefing
- 2019 P4 Parents Briefing Slides
- 2019 P5 Parents' Briefing_Class
- 2019 P5 Parents' Briefing_Level
- 2019 P6 Parents' Briefing_Class
- 2019 P6 Parents' Briefing_Level
- 2018 P2 Parents' Briefing (Hall)
- 2018 P2 Parents' Briefing (Classroom)

- School Newsletters Archive
- Primary 1 Parents' Engagement Session Programme
- 2018 P1 Parents Breakfast cum Dialogue Session
- Parents' Briefing Slides
- SNAC APP
- Big Heart Student Care
- Financial Assistance Application Form 2020

Programme

- Address by School Leader
- Introduction
- Information on Primary School Education
- Direct School Admission – Secondary (DSA-Sec)
- Sexuality Education
- Classroom session

Xingnan Primary School

Introduction

P6 Assistant Year Head
(AYH)



Ms Ng Yin Whee
ng_yin_whee@schools.gov.sg

Year Head
(Upper level)



Mrs Tina Ng
ng_tina@schools.gov.sg

P6 Assistant AYH



Mr Muhammed Faizal Bin Rawi
muhammed_faizal_rawi@schools.gov.sg

Xingnan Primary School

P6 Form Teachers



6A Form Teacher
Mrs Jessie Tan



6A Form Teacher
Mdm Yang Xue Hui



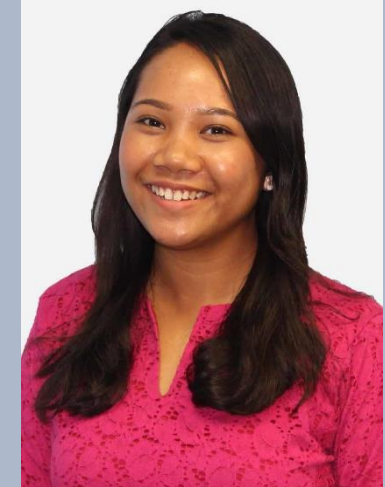
6B Form Teacher
Mdm Hazlyna Bte Usope



6B Form Teacher
Miss Mirna D/O Ramalengam



6C Form Teacher
Ms Ng Yin Whee



6C Form Teacher
Miss Nur Syafawani Amira Kamal

P6 Form Teachers



6D Form Teacher
Mrs Janet See



6D Form Teacher
Mdm Yang Nian



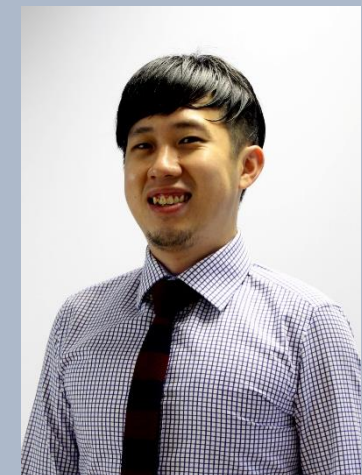
6E Form Teacher
Mr Muhammed Faizal Rawi



6E Form Teacher
Mr Ma Chen



6F Form Teacher
Mr Taufek Bin Siniwi



6F Form Teacher
Mr Jason Chua

PRIMARY SCHOOL EDUCATION

Preparing Your Child For Tomorrow



Your Child's Best Interests at Heart

XINGNANIAN OUTCOMES

Self-Directed Learner

Adaptable and Resilient
Far-sighted and Rooted
Independent and Collaborative



Gracious Citizen

Kind and Confident
Values-driven and Critical



To provide a vibrant environment that
nurtures minds and builds character



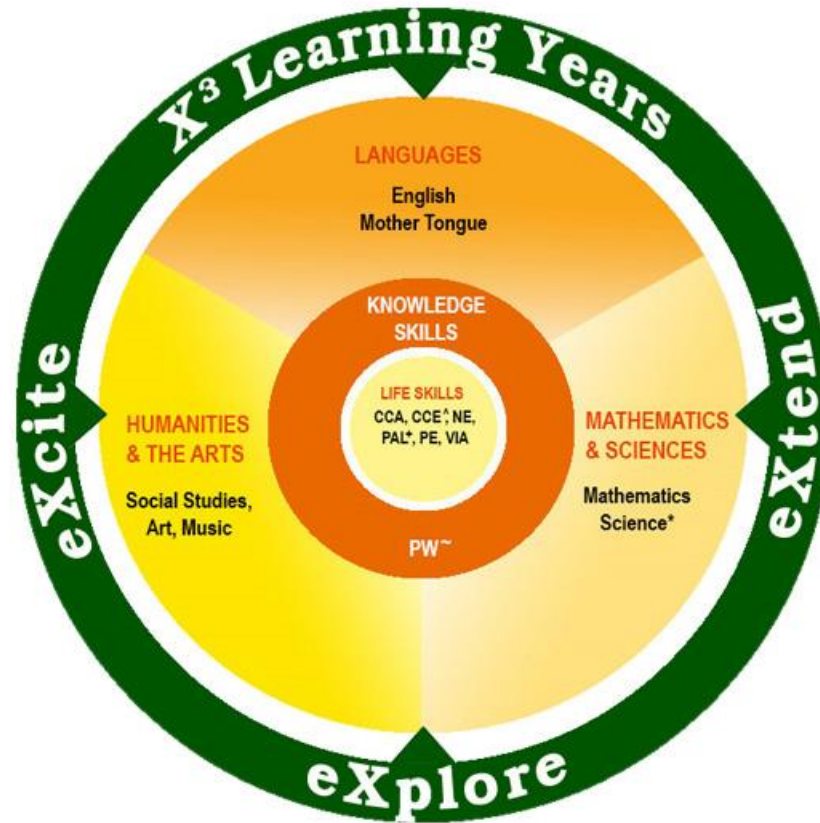
A Self-directed Learner,
A Gracious Citizen

PRIMARY SCHOOL CURRICULUM

Cognitive

Aesthetics

Physical



LEGEND

CCA Co-Curricular Activities
CCE Character and Citizenship Education
NE National Education
PAL Programme for Active Learning
PE Physical Education
PW Project Work
VIA Values in Action

SUBJECTS TESTED IN PSLE[#]

Standard Subjects:

English, Mother Tongue, Mathematics, Science

Foundation Subjects:

Foundation English, Foundation Mother Tongue, Foundation Mathematics, Foundation Science

Optional Subject:

Higher Mother Tongue

[#]Pupils offer Standard or Foundation subjects based on their aptitude in each subject

* Science is taught from Primary 3 onwards.

^{*}CCE includes the Form Teacher Guidance Period.

^{*}PAL will be progressively rolled out to all primary schools by 2017.

[~]Project Work is conducted during curriculum time but is not an examination subject

Morale

Leadership

Social & Moral



**Preparing for the
21st Century**

**Preparing for the
next level of education**

x^3 Learning Years

xPlore (P3-P4)

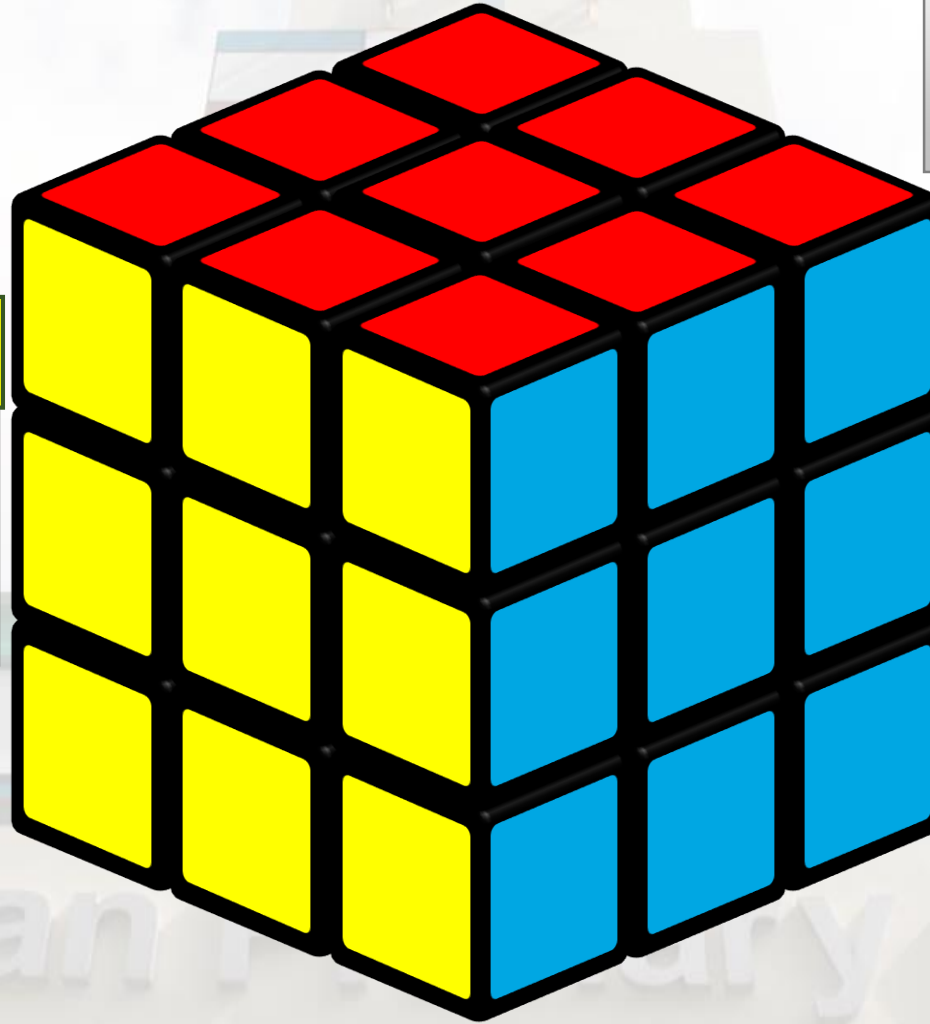
Purposeful, Learning Opportunities through Resource-Rich Environments

xTend (P5-P6)

Transforming Experiences through iNnovation and Discovery

xCite (P1-P2)

Curriculum Integration through Thematic Experiences



QUALITY SCHOOL EXPERIENCE

Curricular

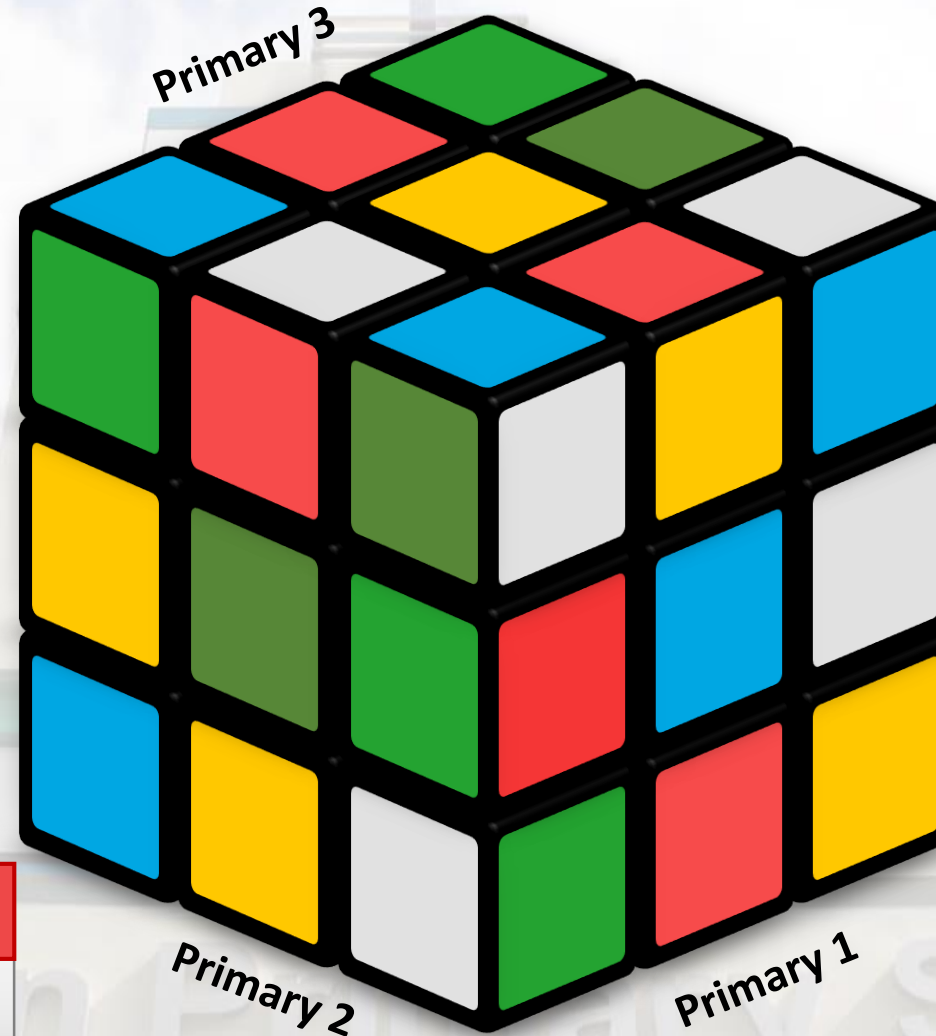
English, SS, Maths,
Science, MTL, PAM

Co-Curricular

CCE, CCA, MOCCA, PAL, FTGP,
NE, Sexuality Education, ICT,
Pastoral Care, Leadership

Student Development

IPW, Learning Journey,
Innovation, VIA



School Events

Carnival, Sports Day,
MuzArt, National Day,
Teachers' Day

Health and Safety

Fire Drill, Health Talks,
Safety Talks

xtend

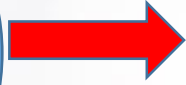
P5 & P6 Learning Years @ **X**ingnan

transforming **e**xperiences
through

i**n**novation and **d**iscovery

EXPECTED OUTCOMES

Subject
disciplines



Kind and Confident
Values-driven and Critical
Independent & Resilient
Far Sighted and Rooted
Adaptable and Collaborative



Knowledge
skills



Character
development

Xingnan

y School



Graduation Day

Learning Journeys

Learning Adventure Day

Inter class Games

Consultation Time

Outdoor Activities

Entrepreneur Day

Motivational Camp

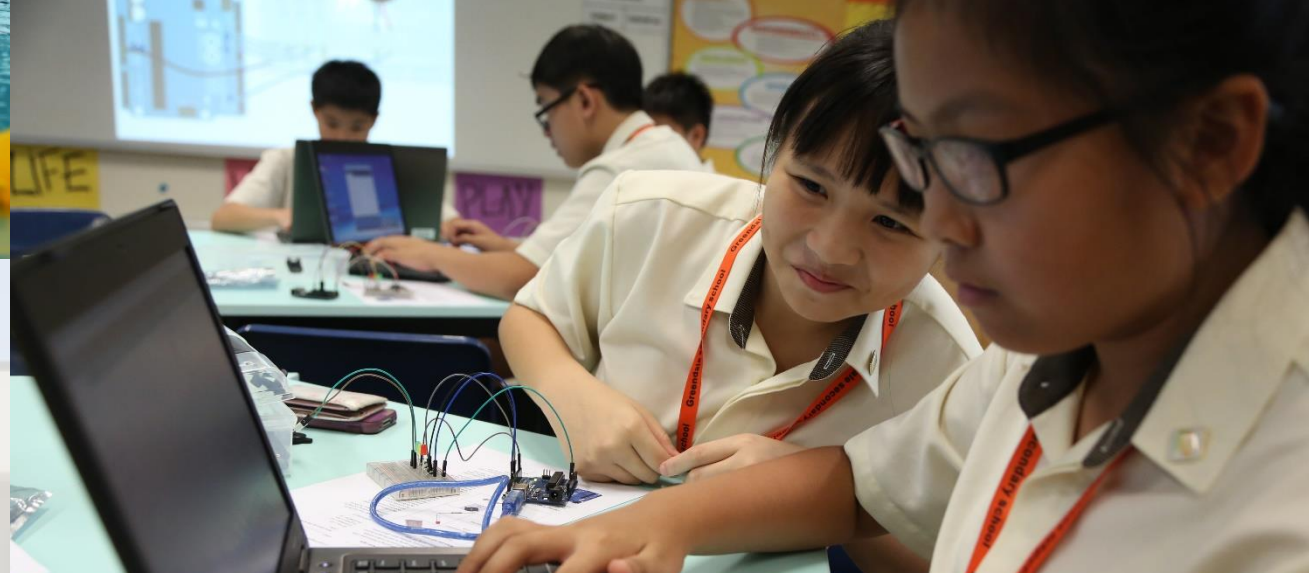
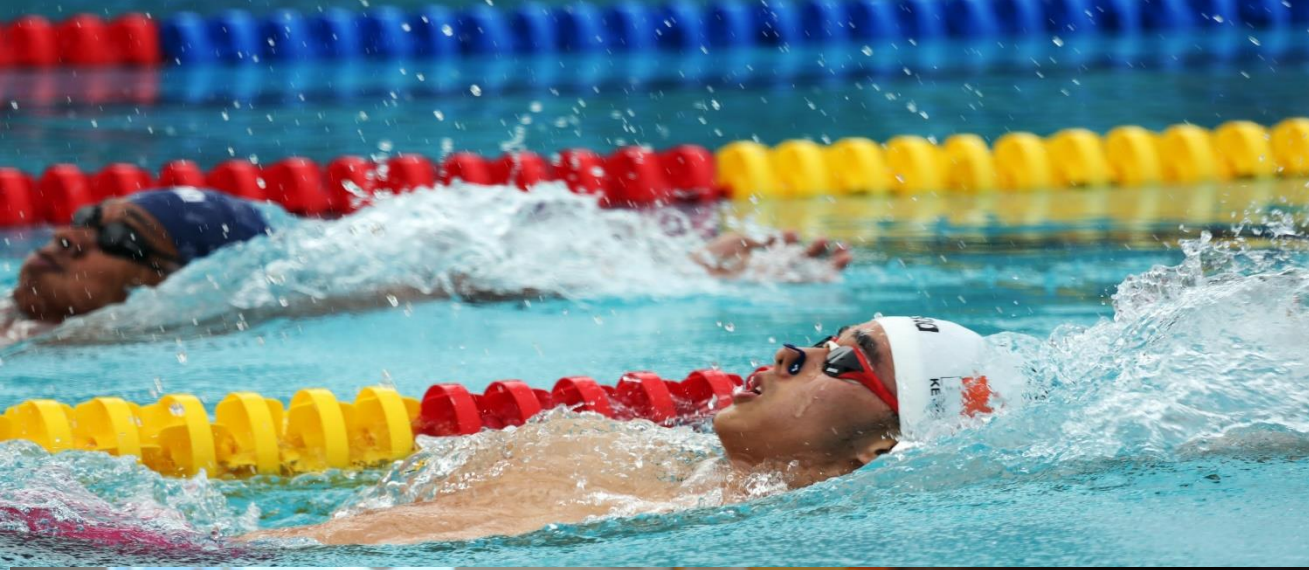
PSLE

Xingnan Primary School

A photograph of a school building with a central clock tower. The building has a modern design with colorful accents in blue, red, and yellow. The sky is blue with some clouds. The text "What's Next? DSA-SEC" is overlaid in the center.

What's Next? DSA-SEC

Xingnan Primary School



Direct School Admission for Secondary Schools (DSA-Sec)

What is DSA – SEC?

- Introduced by the MOE in 2004.
- Promotes holistic education and provides students an opportunity to demonstrate a more diverse range of achievements and talents in seeking admission to a secondary school.
- Gives participating schools greater flexibility in their admission of students
- Talents and achievements, in both academic and non-academic areas, can be considered for secondary school admission.
- Each participating secondary school sets its own criteria for selection, based on the academic and/or non-academic areas that the school emphasises.
- Selection will be based on the pupils' achievements and talents before the PSLE results are released.

Is the DSA-Sec right for my child?

If your child has specific **talents** which a school offers the DSA-Sec in

And is **passionate** about and **committed** to developing his/her strengths and interests

DSA-Sec can support his/her development in that talent area.



Talent

Commit-
ment

Passion

What is the timeline for DSA-Sec application?

Apply for DSA-Sec through **DSA-Sec Application Portal**.

Mid-June – End-August

Rank your offers, if you receive offers from multiple schools

Late-November

Early-May – Early-June
(4 weeks)

Late-October

Shortlisting and selection by secondary schools. Each secondary school has different selection criteria for its categories and programmes. Schools will inform you of the selection outcome **by August**.

You will know whether you have been allocated to a school through the DSA-Sec, at the same time you receive your PSLE results.

Where can I find more information on the 2020 DSA-Sec?

- Check the [MOE DSA-Sec website](#) for important dates and timelines, and for information on how DSA-Sec will be conducted.
- The updated 2020 DSA-Sec information will be published around April 2020.
- The MOE DSA-Sec website also contains information on DSA categories and secondary schools offering them.

Type of Schools

**Special Assistance
Programme Schools
(SAP)**

**Integrated
Programme Schools**

Independent Schools

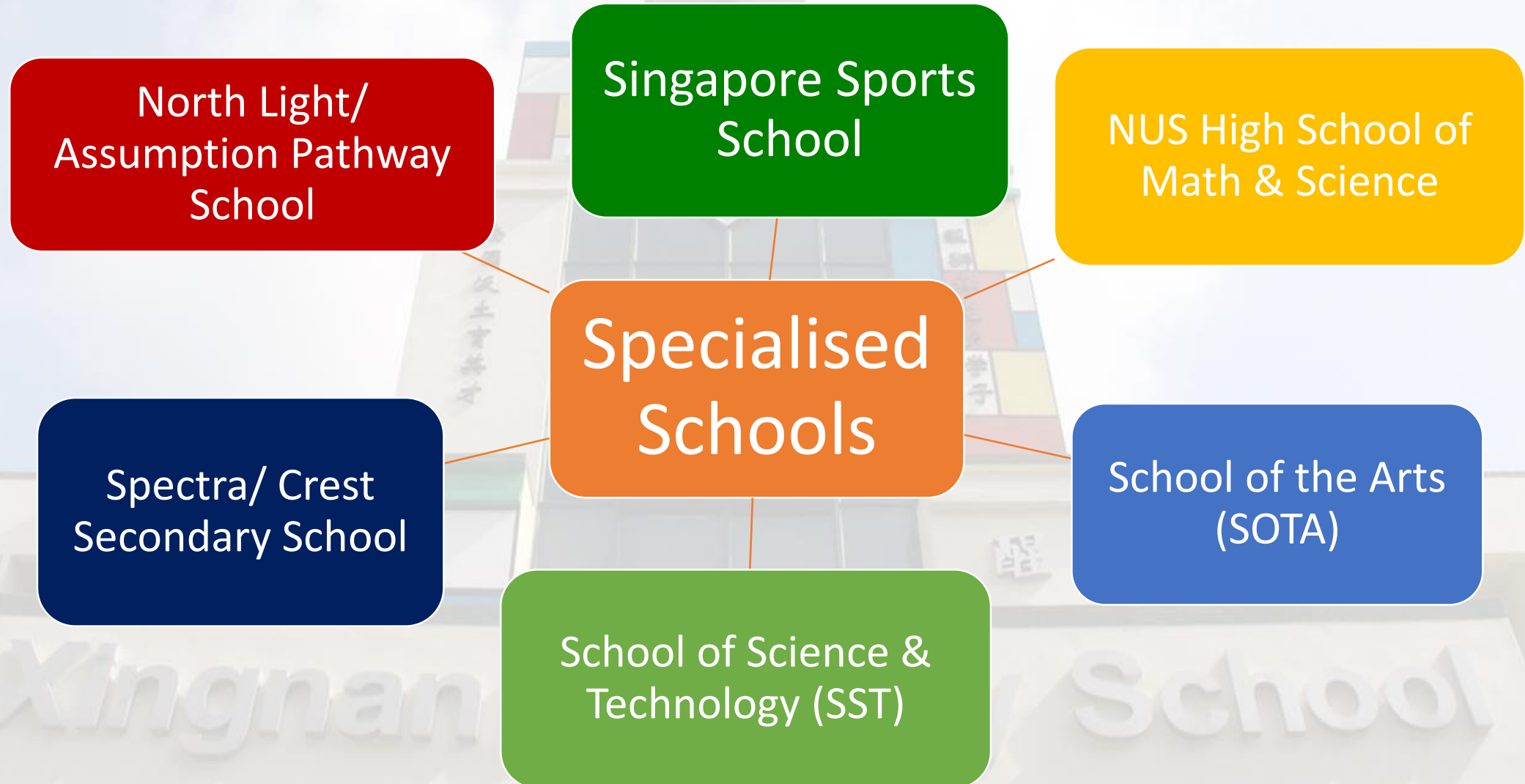
**Autonomous
Schools**

**Schools with
Niche Programmes**

Xingnan

School

Type of Schools



Choosing a secondary school

- Previous year's posting aggregate ranges of the schools
- Distance from home
- Academic performance of the child
- Programmes and schemes in the schools
- Needs of the child
- Cut-off point



More information about DSA...

- Visit MOE's DSA-Sec website:

www.moe.gov.sg/education/admissions/dsa-sec/

- Visit the websites of participating schools through

<http://www.moe.gov.sg/education/admissions/dsa-sec/participating-schools/>

A brochure will be given to your child/ward.

IMPORTANT DATES

Xingnan Primary School

EXAMINATIONS

EXAMINATION	TIMEFRAME
Term 1 Review	TERM 1 WEEK 8 to 9 24 Feb 2020 to 4 March 2020
Term 2 Review	TERM 2 WEEK 5 to 9 22 April 2020 to 20 May 2020
Preliminary Examinations	TERM 3 WEEK 8 to 9 17 Aug 2020 to 26 Aug 2020

EXAMINATIONS

EXAMINATION	TIMEFRAME
PSLE Oral	13 and 14 August Tentative dates
PSLE Listening	18 September Tentative date
PSLE Written	1 – 7 October Tentative dates

Useful websites

MySKILLSfuture

<https://www.myskillsfuture.sg/content/student/en/primary.html>

<https://www.moe.gov.sg/microsites/ecg-parent-guide/#p=1>



<https://www.moe.gov.sg/docs/default-source/document/education/programmes/social-emotional-learning/whatsnextafterpsle.pdf>

SCHOOLBAG
THE EDUCATION NEWS SITE

<https://www.schoolbag.sg/Schoolbagportal>

<https://www.moe.gov.sg/education/national-examinations/>



Ministry of Education
SINGAPORE



KEEPING IN TOUCH WITH THE SCHOOL

➤ **Urgent Matters**

- Call school (Tel: 6791 3679)
- Submit MC and other relevant documents to form teachers upon return

➤ **Non-Urgent Matters**

- Parents Gateway – check notifications, send messages, read XNPS Experience (newsletter)
- Write your queries in the Pupil Diary
- Call and leave a message with the General Office (Tel: 6791 3679)
- [Email](#) the teachers
- To meet up with your child's teacher, make an appointment before coming to school.

Xingnan Primary School

A photograph of a school building with a central clock tower. The building has a modern architectural style with a mix of beige, grey, and colorful accents. The clock tower is the central feature, with a large clock face and a decorative top. The sky is blue with some clouds. The text "Thank you" is overlaid in the center in a large, bold, blue font.

Thank you

Xingnan Primary School